



COVID-19: Clinical Deep Dive into the Research – Part II

This meeting will be recorded and will be available at www.fmda.org/journalclub.php



FMDA Journal Club

May 20, 2020

Diane Sanders-Cepeda, DO, CMD – Presenter

Agenda

COVID 19 state of the state

COVID 19 Updates

Clinical Deep Dive

Open Discussion

World Map

NEW

U.S. Map

Critical Trends

COVID-19 Dashboard by the Center for Systems Science and Engineering (CSSE) at Johns Hopkins University (JHU)

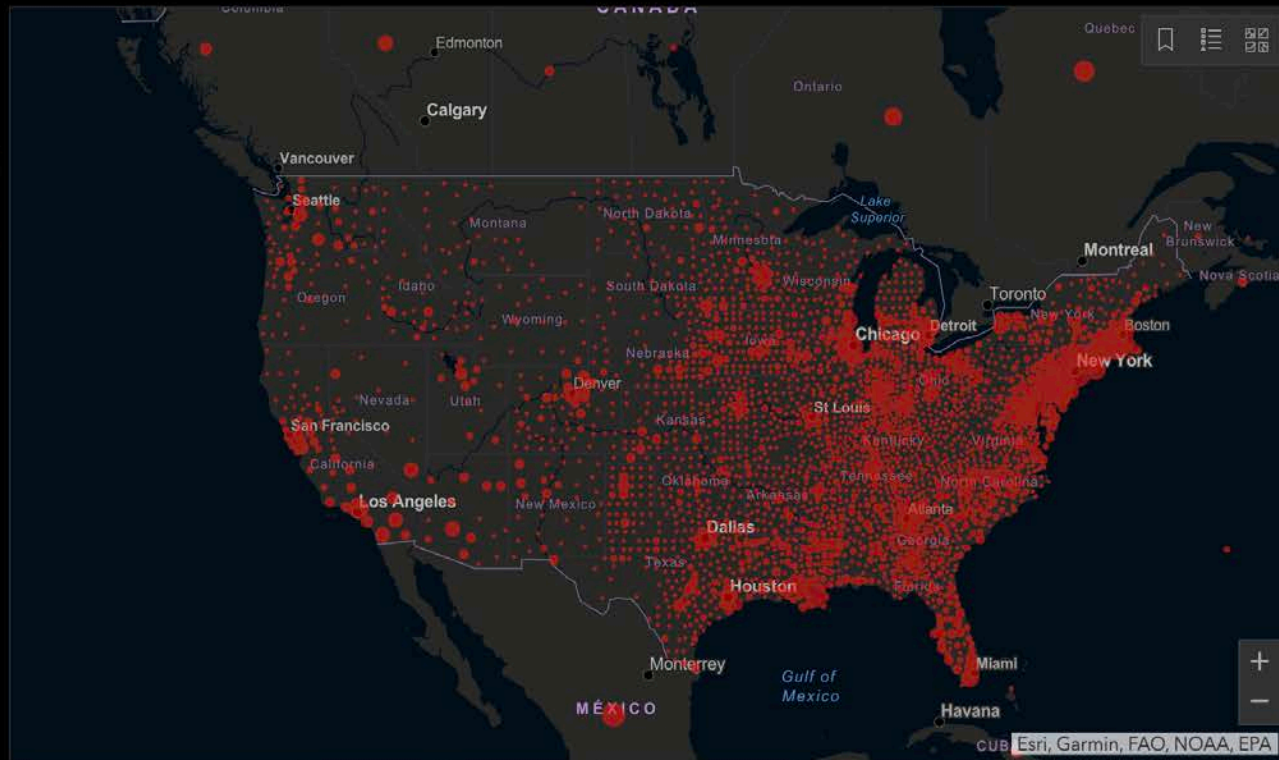
Total Confirmed 1,528,661

Confirmed Cases by Country/Region/Sovereignty

- 1,528,661 US
- 308,705 Russia
- 271,885 Brazil
- 250,138 United Kingdom
- 232,037 Spain
- 226,699 Italy
- 180,933 France
- 177,842 Germany
- 151,615 Turkey
- 126,949 Iran
- 106,886 India
- 99,483 Peru

Admin0 Admin1 Admin2

Last Updated at (M/D/YYYY) 5/20/2020, 8:32:12 AM



Cumulative Confirmed Cases Active Cases Incidence Rate Case-Fatality Ratio Testing Rate Hospitalization Rate

188 countries/regions

Lancet Inf Dis Article: Here. Mobile Version: Here. Lead by JHU CSSE. Automation Support: Esri Living Atlas team and JHU APL. Contact US. FAQ. Read more in this blog.

Global Deaths 91,938

91,938 deaths US

US State Level Deaths, Recovered

28,558 deaths, 61,886 recovered New York US

10,587 deaths, 23,657 recovered New Jersey US

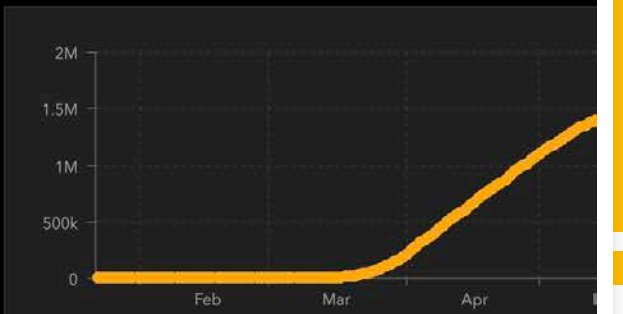
5,938 deaths, recovered Massachusetts US

5,017 deaths, 28,234 recovered Michigan US

4,628 deaths, recovered Pennsylvania US

Global Deaths

US Deaths, Recovered



Confirmed Logarithmic Daily Cases



Florida's COVID-19 Data and Surveillance Dashboard

Florida Department of Health, Division of Disease Control and Health Protection

Total Cases
47,471

Cumulative Data for Florida Residents:

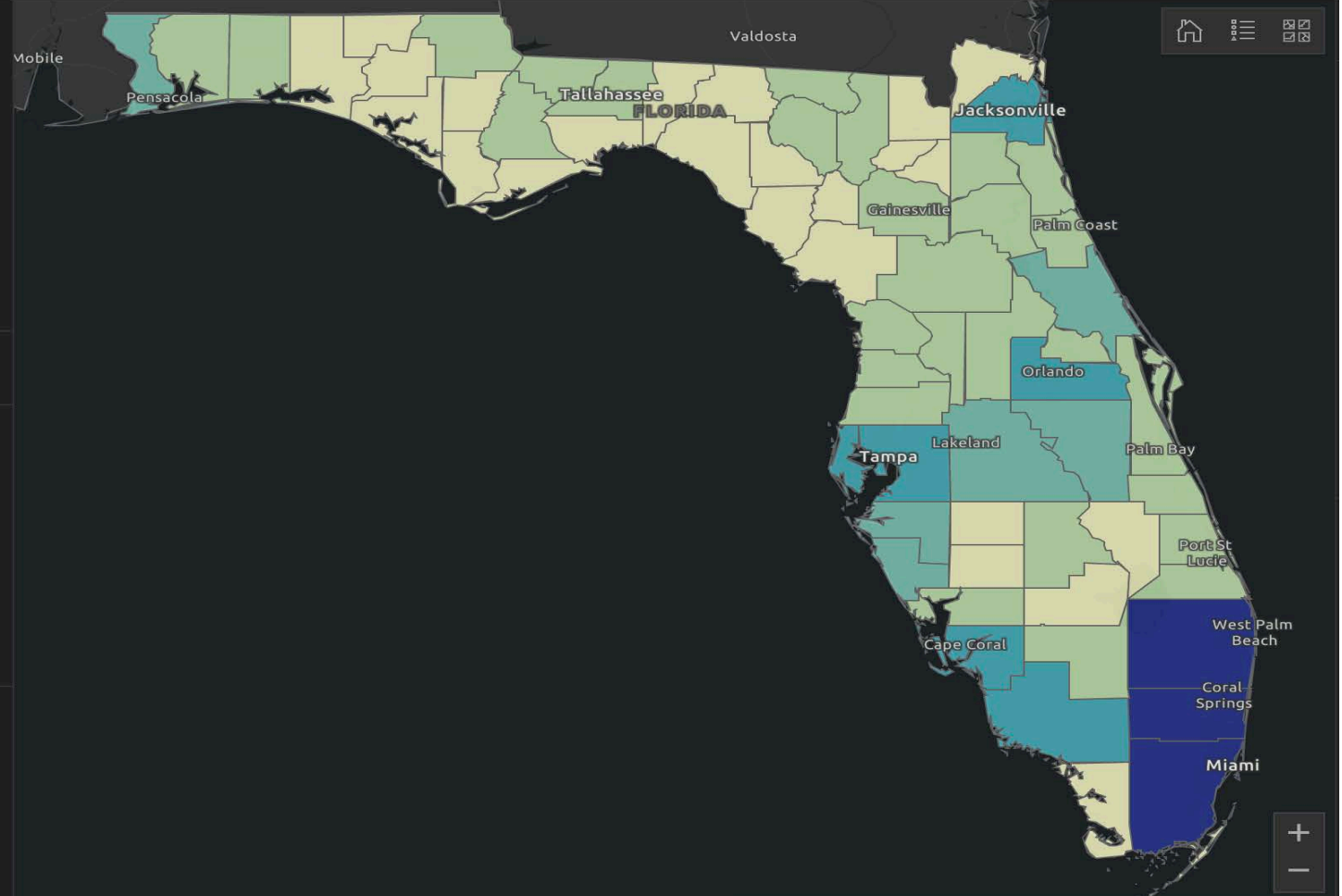
Positive Residents
46,197

Hospitalizations

8,681

Deaths

2,096



FDEP, Esri, HERE, Garmin, FAO, NOAA, USGS, EPA, NPS | ...

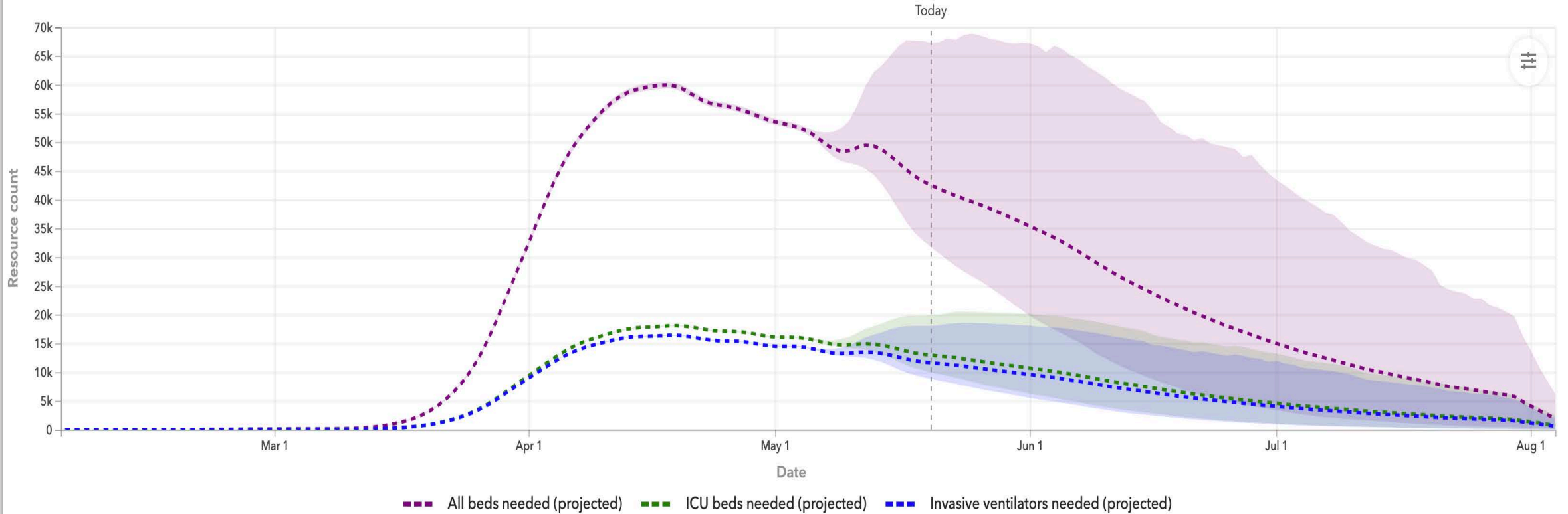
Data is updated every day at approximately 11 A.M. ET.

[Click here to access and download data](#)

United States of America

Hospital Resource Use

All resources All beds ICU beds Invasive ventilators



All resources specific to COVID-19 patients.

Shaded areas indicate uncertainty



Statement on the Reopening of Post-Acute & Long-Term Care Facilities

As states and local communities begin to reopen their retail stores, restaurants, offices, and other businesses, residents and employees of post-acute and long-term care facilities, along with their families, will wonder when they too will be able to end no-visitor policies, dine together again, and enjoy group activities and routine visits to the salon.

Residents of post-acute and long-term care (PALTC) facilities remain the most vulnerable population during this ongoing COVID-19 pandemic. While some areas in the country have seen a decline in hospital admissions and deaths from COVID-19, other areas continue to see a rise in cases, hospitalizations and deaths within PALTC. Of all deaths reported in the U.S., estimates suggest that some 40% to 56% are nursing home related.

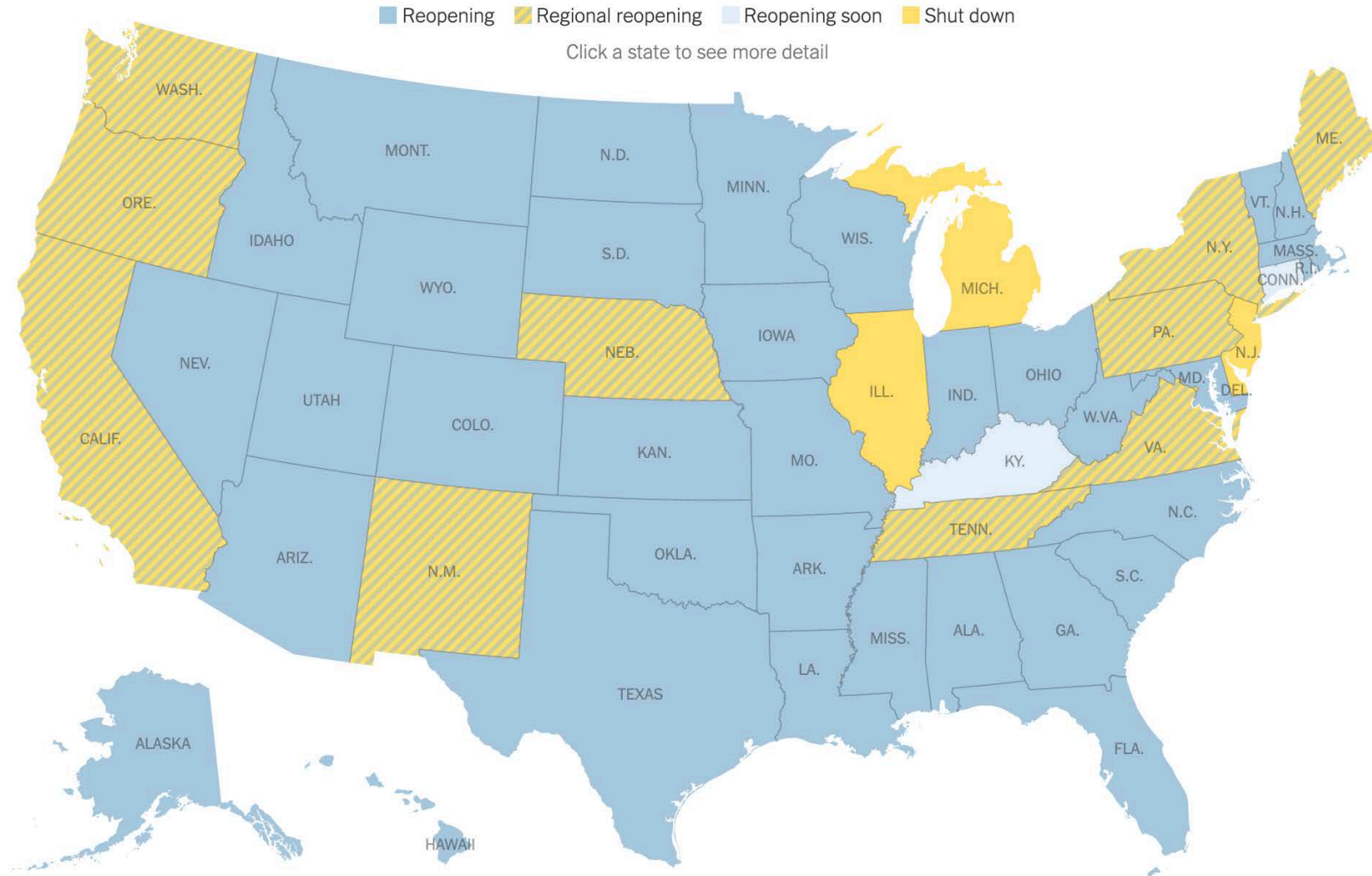
Infectious disease experts warn that the country will experience a second wave of the virus this fall and it is unclear yet if we will be fully prepared for it. In addition, widespread, reliable testing is still not a reality for many PALTC communities, nor is a consistent supply of personal protective equipment for healthcare workers in long term care.

Given these factors, the decision to reopen or to relax social distancing efforts within PALTC communities must be made with great caution and on an individual basis, regardless of the status of the surrounding community. This critical decision rests with the people most familiar with residents, staff and resources—the clinical leaders managing the care of the patients and residents in these facilities. Medical directors, executive directors and directors of nursing, along with their regional leadership, should work in collaboration with their local health departments and hospital systems to determine the appropriate time to reopen their nursing homes and assisted living communities to visitors, to relax social distancing policies and personal protective equipment requirements.

Finally, we urge federal, state and local governments and health authorities to stipulate that, in the chain of events leading to reopening businesses and buildings, that PALTC facilities, where older adults most at risk of serious illness or death from COVID-19 reside, be the last to open to visitors and outside contractors and vendors.

The New York Times

By Sarah Mervosh, Jasmine C. Lee, Lazaro Gamio and Nadja Popovich Updated May 19, 2020





THE SOCIETY
FOR POST-ACUTE AND
LONG-TERM
CARE MEDICINE

Policy Statement: COVID-19 Testing Strategies Should Be Tailored to the Clinical Situation

May 18, 2020

Issue

There is a clear understanding that protecting our vulnerable post-acute and long-term care (PALTC) population is dependent on adequate access to testing. Testing must be readily accessible, completed in a timely manner by those with appropriate training, have low false negative or false positive rates, impose a low physical or emotional burden on the person being tested, and be appropriately reimbursed.

Many states, local health departments, facilities, and consumers are calling for “universal testing” of PALTC residents and staff. The underlying premises behind these calls are that tests would be available for all, would meet the criteria set forth above, result in better care being delivered to our PALTC residents, and save lives.

Clinical Deep Dive

“An Extraordinarily Efficient Virus”

Dr. Anthony Fauci - April 16, 2020

A blue speech bubble graphic with a white text overlay. The bubble has a dark blue shadow on the left side, giving it a 3D effect. The text is centered within the bubble.

COVID 19: Unfortunately
Efficient

Research Letter

ONLINE FIRST FREE

April 27, 2020

Prevalence of SARS-CoV-2 Infection in Residents of a Large Homeless Shelter in Boston

Travis P. Baggett, MD, MPH¹; Harrison Keyes, MPAS, PA-C¹; Nora Sporn, MA, MPH²; [et al](#)

» [Author Affiliations](#) | [Article Information](#)

JAMA. Published online April 27, 2020. doi:10.1001/jama.2020.6887

Research Letter

ONLINE FIRST

FREE

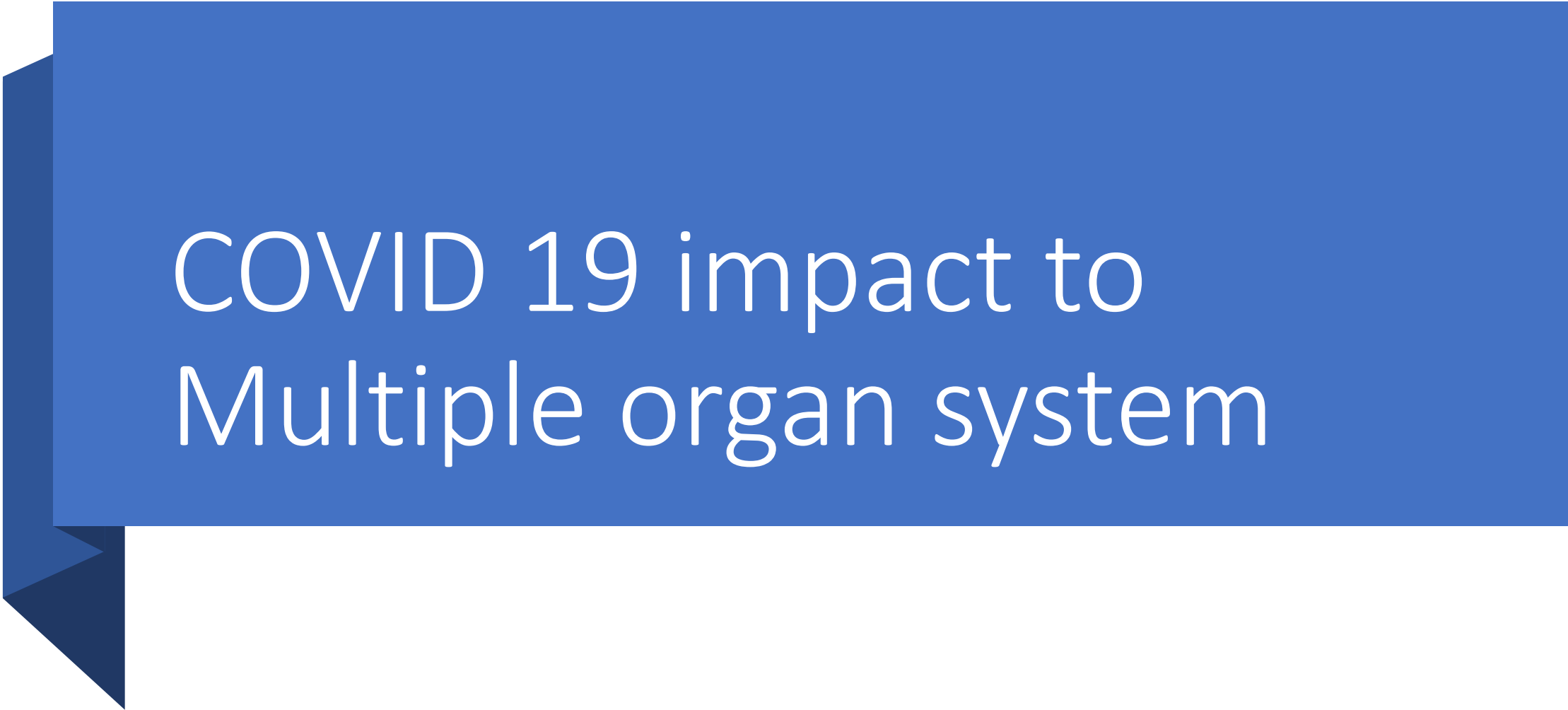
May 18, 2020

Seroprevalence of SARS-CoV-2-Specific Antibodies Among Adults in Los Angeles County, California, on April 10-11, 2020

Neeraj Sood, PhD¹; Paul Simon, MD²; Peggy Ebner, BA³; [et al](#)

» [Author Affiliations](#) | [Article Information](#)

JAMA. Published online May 18, 2020. doi:10.1001/jama.2020.8279



COVID 19 impact to
Multiple organ system

The NEW ENGLAND JOURNAL *of* MEDICINE

ORIGINAL ARTICLE

Cardiovascular Disease, Drug Therapy, and Mortality in Covid-19

Mandeep R. Mehra, M.D., Sapan S. Desai, M.D., Ph.D.,
SreyRam Kuy, M.D., M.H.S., Timothy D. Henry, M.D., and Amit N. Patel, M.D.

PRACTICE | FIVE THINGS TO KNOW ABOUT ...

Cardiac considerations in patients with COVID-19

Oscar Calvillo-Argüelles MD, Heather J. Ross MD MHSc

■ Cite as: *CMAJ* 2020. doi: 10.1503/cmaj.200562; early-released May 1, 2020

The NEW ENGLAND JOURNAL *of* MEDICINE

CORRESPONDENCE

**Lupus Anticoagulant and Abnormal Coagulation
Tests in Patients with Covid-19**

PRACTICE | FIVE THINGS TO KNOW ABOUT ...

Coagulopathy associated with COVID-19

Stephanie G. Lee MD MSc, Michael Fralick MD PhD, Michelle Sholzberg MDCM MSc

■ Cite as: *CMAJ* 2020. doi: 10.1503/cmaj.200685; early-released May 1, 2020

AGA Institute Rapid Review of the GI and Liver Manifestations of COVID-19, Meta-Analysis of International Data, and Recommendations for the Consultative Management of Patients with COVID-19

Authors: Shahnaz Sultan*¹, Osama Altayar*², Shazia M. Siddique³, Perica Davitkov⁴, Joseph D. Feuerstein⁵, Joseph K. Lim⁶, Yngve Falck-Ytter⁴, Hashem B. El-Serag⁷ on behalf of the AGA

Renal Involvement and Early Prognosis in Patients with COVID-19 Pneumonia

Guangchang Pei,¹ Zhiguo Zhang ,^{2,3} Jing Peng,⁴ Liu Liu,¹ Chunxiu Zhang,¹ Chong Yu,¹ Zufu Ma,¹ Yi Huang,¹ Wei Liu,¹ Ying Yao,¹ Rui Zeng,¹ and Gang Xu¹

¹Division of Nephrology, Tongji Hospital, Tongji Medical College, Huazhong University of Science and Technology, Wuhan, China

²School of Medicine and Health Management, Tongji Medical College, Huazhong University of Science and Technology, Wuhan, China

³Hubei Provincial Research Center for Health Technology Assessment, Wuhan, China

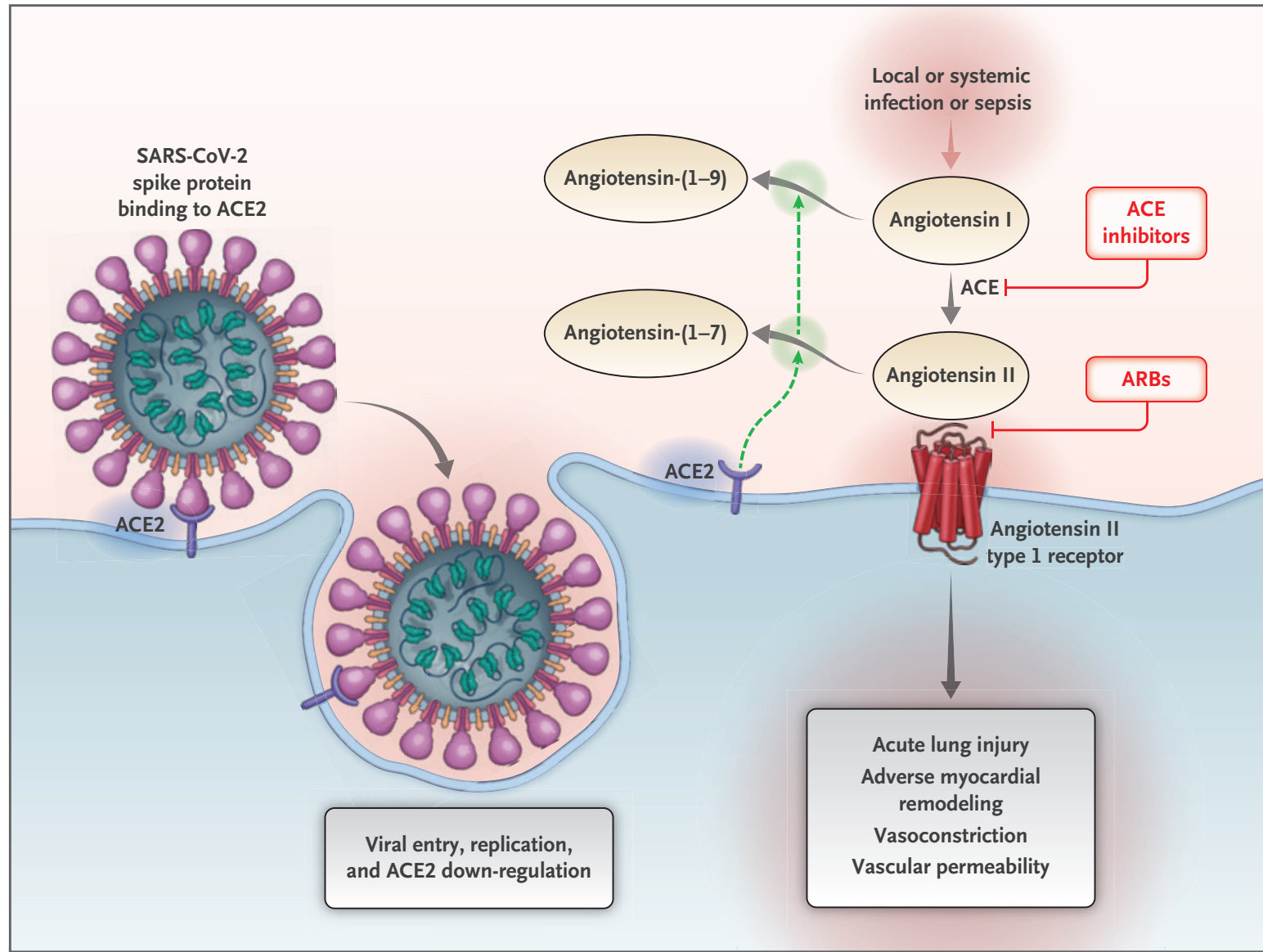
⁴Department of Laboratory Medicine, Tongji Hospital, Tongji Medical College, Huazhong University of Science and Technology, Wuhan, China

The NEW ENGLAND JOURNAL *of* MEDICINE

SPECIAL REPORT

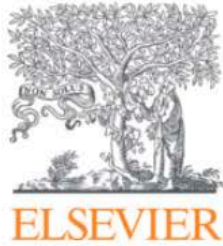
**Renin–Angiotensin–Aldosterone System
Inhibitors in Patients with Covid-19**

Muthiah Vaduganathan, M.D., M.P.H., Orly Vardeny, Pharm.D., Thomas Michel, M.D., Ph.D.,
John J.V. McMurray, M.D., Marc A. Pfeffer, M.D., Ph.D., and Scott D. Solomon, M.D.



A blue ribbon graphic with a folded end on the left side, containing white text.

Altered Mental Status & COVID 19



The American Journal of Geriatric Psychiatry

Available online 15 May 2020

In Press, Journal Pre-proof 



Brief Report

Altered Mental Status as a Novel Initial Clinical Presentation for COVID-19 Infection in the Elderly

Christine F. Ward D.O.¹, Gary S. Figiel M.D.¹, William M. McDonald M.D.²  

ARTICLES | [ONLINE FIRST](#)

Psychiatric and neuropsychiatric presentations associated with severe coronavirus infections: a systematic review and meta-analysis with comparison to the COVID-19 pandemic

[Jonathan P Rogers, MRCPsych](#)  [†]  • [Edward Chesney, MRCPsych](#) [†] • [Dominic Oliver, MSc](#) • [Thomas A Pollak, PhD](#) • [Prof Philip McGuire, FMedSci](#) • [Paolo Fusar-Poli, PhD](#) • et al. [Show all authors](#) •

[Show footnotes](#)

[Open Access](#) • Published: May 18, 2020 • DOI: [https://doi.org/10.1016/S2215-0366\(20\)30203-0](https://doi.org/10.1016/S2215-0366(20)30203-0) •



Searching for a
Treatment

WHO Launches Global Solidarity Project To Ramp Up Clinical Trials For Coronavirus Drugs

“Multiple small trials with different methodologies may not give us the clear strong evidence we need about which treatments help to save lives,” said WHO Director-General Tedros Adhanom Ghebreyesus. Scientists around the world have been racing around the clock to come up with treatments, even as a promising drug fails to show results. Meanwhile, President Donald Trump considered an executive order to expand the use of drugs in coronavirus patients, but FDA scientists objected over safety concerns. And health officials push back on rumors the ibuprofen could worsen the symptoms.

By Robert Nellis

Early indicators: Investigational convalescent plasma is safe for patients with COVID-19

May 14, 2020



- Mayo Clinic & collaborators reported safety data on the first 5,000 hospitalized patients transfused
- As of May 11th
 - 14,000 patients enrolled
 - 8,900 patients infused with Convalescent plasma



ClinicalTrials.gov

[Home](#) > [Search Results](#) > Study Record Detail

Adaptive COVID-19 Treatment Trial (ACTT)

THE LANCET

ARTICLES | [ONLINE FIRST](#)

Triple combination of interferon beta-1b, lopinavir–ritonavir, and ribavirin in the treatment of patients admitted to hospital with COVID-19: an open-label, randomised, phase 2 trial

[Prof Ivan Fan-Ngai Hung, MD](#) • [Kwok-Cheung Lung, FRCP](#) • [Eugene Yuk-Keung Tso, FRCP](#) • [Raymond Liu, FRCP](#) • [Tom Wai-Hin Chung, MRCP](#) • [Man-Yee Chu, MRCP](#) • et al. [Show all authors](#)

Published: May 08, 2020 • DOI: [https://doi.org/10.1016/S0140-6736\(20\)31042-4](https://doi.org/10.1016/S0140-6736(20)31042-4) •



The Race for a Vaccine

Moderna Announces Positive Interim Phase 1 Data for its mRNA Vaccine (mRNA-1273) Against Novel Coronavirus

May 18, 2020 at 7:30 AM EDT

 PDF Version

7 APRIL 2020 NEWS

Inovio commences Phase I trial of DNA vaccine for Covid-19

SHARE 



Where are the NON-COVID 19
patients?

The NEW ENGLAND JOURNAL *of* MEDICINE

MEDICINE AND SOCIETY

Debra Malina, Ph.D., *Editor*

**The Untold Toll — The Pandemic's Effects
on Patients without Covid-19**

Lisa Rosenbaum, M.D.

[← Back to The Daily Briefing](#)

US hospitals are seeing fewer patients without Covid-19. (And that could be a problem.)

April 22, 2020

The image features a landscape of snow-capped mountains under a bright sky. A prominent, dark blue horizontal band stretches across the middle of the frame, serving as a background for the text. The text is centered within this band.

Ongoing Preparedness


Infection Control & Hospital Epidemiology (2020), **41**, 729–730

doi:[10.1017/ice.2020.98](https://doi.org/10.1017/ice.2020.98)



Commentary

Unprecedented solutions for extraordinary times: Helping long-term care settings deal with the COVID-19 pandemic

Swati Gaur MD, MBA¹, Ghinwa Dumyati MD², David A. Nace MD, MPH³ and Robin L. P. Jump MD, PhD^{4,5} 

¹New Horizons Nursing Facilities, Gainesville, Georgia, ²Center for Community Health, University of Rochester Medical Center, Rochester, New York, ³Division of Geriatric Medicine, Department of Medicine, School of Medicine, University of Pittsburgh, Pittsburgh, Pennsylvania, ⁴Geriatric Research Education and Clinical Center (GRECC), Specialty Care Center of Innovation and Infectious Disease Section, Louis Stokes Cleveland Veterans Affairs Medical Center (VAMC), Cleveland, Ohio and ⁵Division of Infectious Diseases and HIV Medicine, Department of Medicine and Department of Population and Quantitative Health Sciences, Case Western Reserve University School of Medicine, Cleveland, Ohio

Special Article |  [Free Access](#) |

COVID-19 IN THE LONG-TERM CARE SETTING: THE CMS PERSPECTIVE

Alan F. Levitt M.D. , Shari M. Ling M.D.

First published: 13 May 2020 | <https://doi.org/10.1111/jgs.16562>

This article has been accepted for publication and undergone full peer review but has not been through the copyediting, typesetting, pagination and proofreading process, which may lead to differences between this version and the Version of Record. Please cite this article as doi: 10.1111/jgs.16562.



"The breaking of a
wave cannot explain
the whole sea."
by Vladimir Nabokov

The background features a central white diamond shape. This diamond is surrounded by four large, overlapping, semi-transparent blue shapes that form a larger diamond-like frame. The corners of this frame are cut off, creating a shape similar to a square with clipped corners. Additionally, there are four yellow shapes, each a square with a clipped corner, positioned at the corners of the overall composition, overlapping the blue shapes. The colors used are a muted blue and a golden-yellow, set against a light gray background.

Open Discussion

Questions & Comments

Diane Sanders-Cepeda, DO CMD
diane_sanders-cepeda@uhc.com



THE FLORIDA SOCIETY
FOR POST-ACUTE AND
LONG-TERM
CARE MEDICINE

**400 Executive Center Drive, Suite 208
West Palm Beach, FL 33401**

www.fmda.org; www.bestcarepractices.org



This meeting has been recorded and will be available at www.fmda.org/journalclub.php