



COVID-19: Evolving Our Infection Control Policies and Response

This meeting will be recorded and will be available at www.fmda.org/journalclub.php



FMDA Journal Club

June 3, 2020

Diane Sanders-Cepeda, DO, CMD – Presenter

Joseph Mylotte, MD– Featured Guest

Agenda

COVID 19: State of the State

Literature Update

Discussion with Dr. Mylotte –
Evolution of Infection Control

Open Discussion

World Map

U.S. Map

Critical Trends

COVID-19 Dashboard by the Center for Systems Science and Engineering (CSSE) at Johns Hopkins University (JHU)

Total Confirmed

1,831,821

Confirmed Cases by
Country/Region/Sovereignty

1,832,412 US

555,383 Brazil

431,715 Russia

279,393 United Kingdom

239,932 Spain

233,515 Italy

208,800 India

188,450 France

184,121 Germany

170,039 Peru

165,555 Turkey

160,696 Iran



Cumulative Confirmed Cases

Active Cases

Incidence Rate

Case-Fatality Ratio

Testing Rate

Hospitalization Rate

188

countries/regions

Lancet Inf Dis Article: [Here](#). Mobile Version: [Here](#).

Lead by JHU CSSE. Technical Support: [Esri Living Atlas team](#) and [JHU APL](#). Financial Support: [JHU](#) and [NSF](#). Click [here](#) to [donate](#) to the CSSE dashboard team, and other JHU COVID-19 Research Efforts. [FAQ](#). Read more in this [blog](#). [Contact Us](#)

Global Deaths

106,198

106,181 deaths
US

US State Level
Deaths, Recovered

29,968 deaths, **66,262**
recovered
New York US

11,771 deaths, **26,815**
recovered
New Jersey US

7,085 deaths, **recovered**
Massachusetts US

5,667 deaths, **48,838**
recovered
Pennsylvania US

5,553 deaths, **38,099**
recovered

Global Deaths

US Deaths, Recovered



Confirmed

Logarithmic

Daily Cases

Admin0

Admin1

Admin2

Last Updated at (M/D/YYYY)

6/3/2020, 8:33:05 AM

United States of America

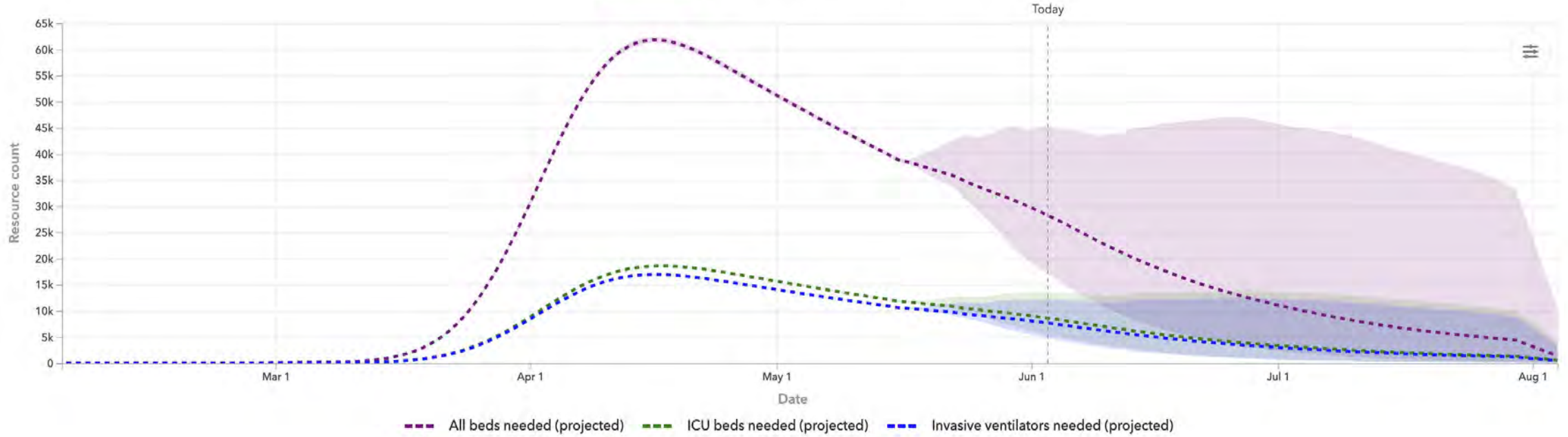
To see results within this country, select a subnational location

Shaded areas indicate 95% uncertainty interval.

Trend Compare Map

Hospital resource use

All resources All beds ICU beds Invasive ventilators



All beds needed (projected) ICU beds needed (projected) Invasive ventilators needed (projected)

All resources specific to COVID-19 patients.
Shaded areas indicate 95% uncertainty interval.



Florida's COVID-19 Data and Surveillance Dashboard

Florida Department of Health, Division of Disease Control and Health Protection

Select a County



Total Cases

57,447

Cumulative Data for Florida Residents:

Positive Residents

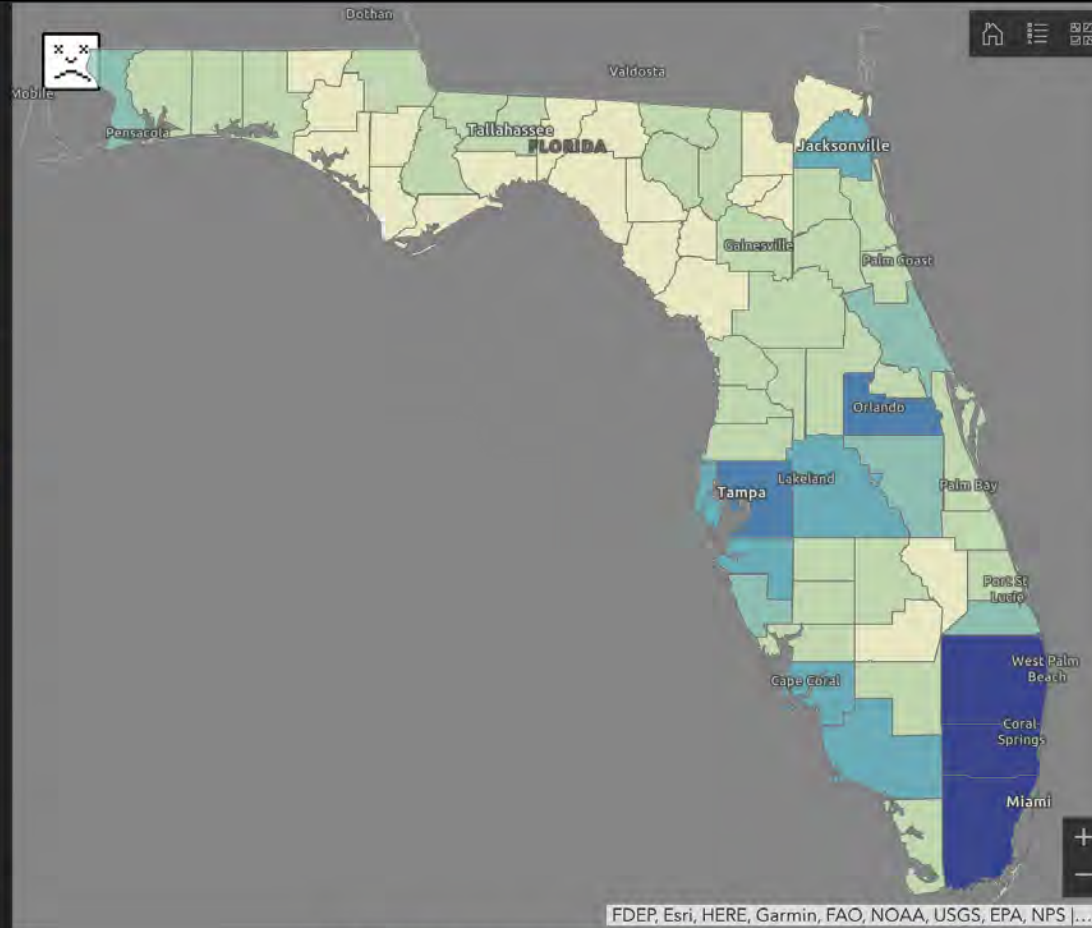
56,001

Hospitalizations

10,412

Deaths

2,530

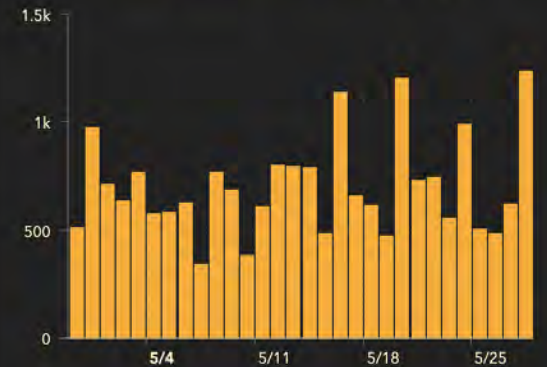


FDEP, Esri, HERE, Garmin, FAO, NOAA, USGS, EPA, NPS ...

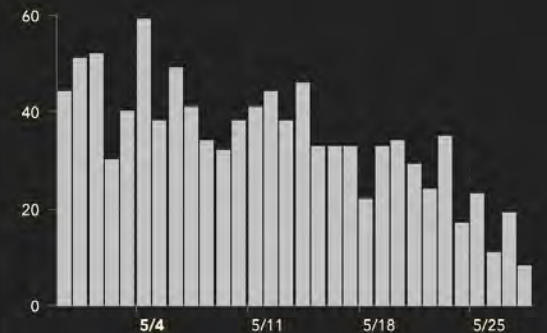
Data is updated every day at approximately 11 A.M. ET.
[Click here to access and download data](#)

Recent Data for Florida Residents (Last 30 Days):

New Cases of Residents by Day



Resident Deaths by Date of Death



The Deaths by Day chart shows the total number of Florida residents with confirmed COVID-19 that died on each calendar day (12:00 AM - 11:59 PM).



Literature Update

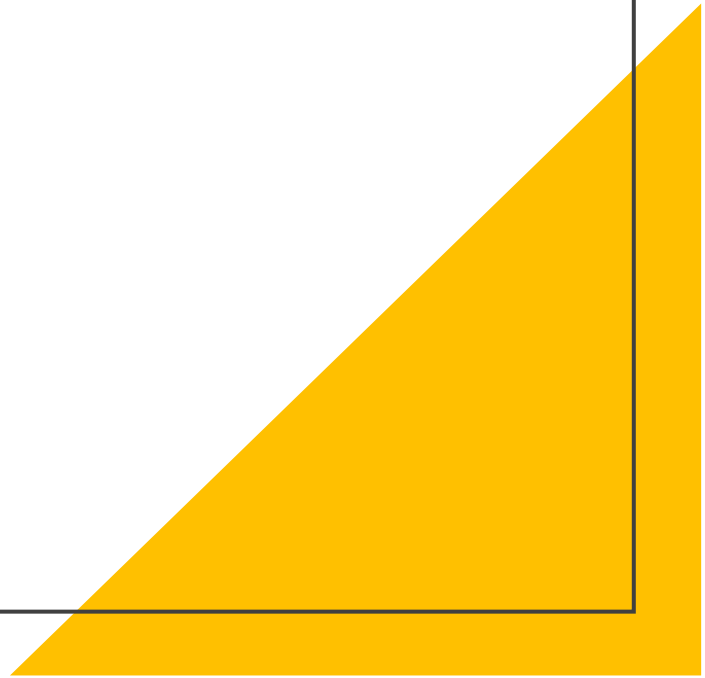


Recommendations for LTC Settings

1. SNFs should only accept patients with active COVID-19 infections if they can provide airborne isolation
2. Recovering patients with COVID-19 infections must have 2 negative COVID-19 test on 2 consecutive days
3. SNFs should screen potential admissions for both typical and atypical symptoms

Table 1. Typical and Atypical Signs and Symptoms of COVID-19 in Older Adults

Typical Signs and Symptoms
Fever \geq 37.5°C (99.5°F)
Cough
Shortness of breath
Atypical Signs and Symptoms
Confusion or change in mental status (If noted, check pulse oximetry to determine whether increased oxygen is required.)
Exacerbations of congestive heart failure or chronic obstructive pulmonary disease
Muscle aches, headache
Sore throat, runny nose
Chest pain
Diarrhea, nausea, and vomiting



Recommendations for LTC Settings

4. COVID-19 naïve facilities should not accept any new admissions that they suspect may have COVID-19
5. Hospitals and SNFs need to work together to identify patients who will need to transition to a skilled nursing facility
6. SNFs need to be designated as high-priority sites for increased access to tests and PPE

Journal Pre-proof

Policy Recommendations regarding Skilled Nursing Facility Management of COVID-19: Lessons From New York State

Paula E. Lester, MD, CMD, Timothy Holahan, DO, CMD, David Siskind, MD, CMD, Elaine Healy, MD, CMD



Highlights

Dedicated Staff to care for COVID-19 positive patients

Test-based and non test-based strategies

Cohorting COVID-19 patients – dedicated COVID-19 units and transition units for new admits that are COVID-19 negative

Recommendations on required PPE

Providing palliative care and advance care planning



National Centre for
Infectious Diseases



ACADEMY OF MEDICINE
SINGAPORE



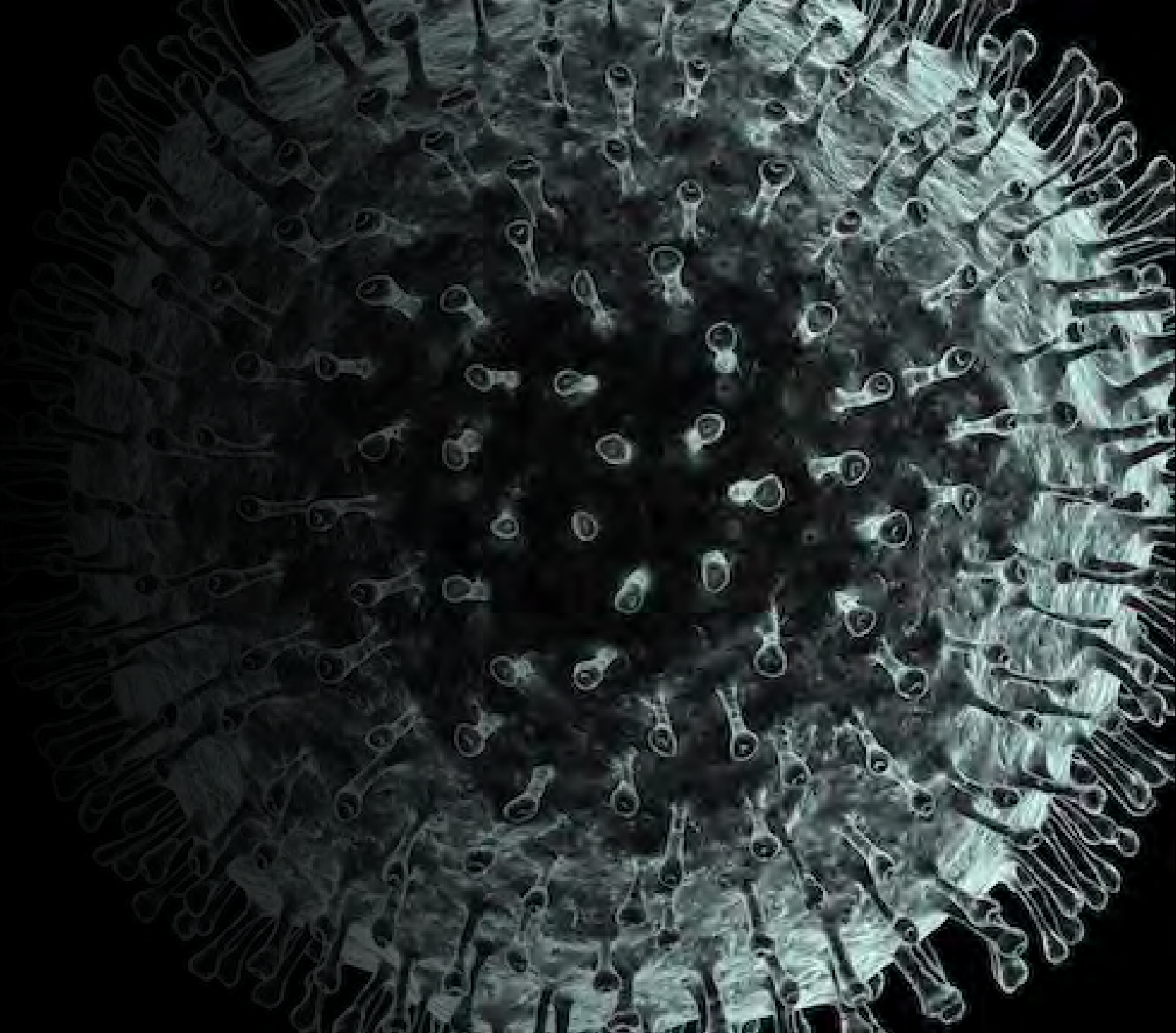
**Position Statement from the National Centre for Infectious Diseases
and the Chapter of Infectious Disease Physicians,
Academy of Medicine, Singapore –
23 May 2020**

Key Points on Infectivity

Viral RNA detection by PCR does not equal “infectiousness” (viable virus)

When Viral load is low, no viable virus is found

Viable virus was not found after the second week of illness despite persistence of PCR detection of RNA



A close-up photograph of a DNA microarray. The array consists of a grid of small, colorful spots (red, green, blue, yellow) on a light-colored surface. A glass pipette tip is positioned over one of the spots, and a glass petri dish is visible in the foreground, partially obscuring the array. The background is dark and out of focus.

The Evolution of Infection Control

Discussion with Dr. Mylotte

Testing Strategies



Cohorting COVID-19 Patients in SNFs



Addressing PPE

De-Isolation Guidance for SNFs





Open Discussion



Questions & Comments

Diane Sanders-Cepeda, DO, CMD
Diane_sanders-cepeda@uhc.com



THE FLORIDA SOCIETY
FOR POST-ACUTE AND
LONG-TERM
CARE MEDICINE

**400 Executive Center Drive, Suite 208
West Palm Beach, FL 33401**

www.fmda.org; www.bestcarepractices.org



This meeting has been recorded and will be available at www.fmda.org/journalclub.php