



COVID-19 Impact: Clinical & Regulatory Updates

This meeting will be recorded and will be available at www.fmda.org/journalclub.php



FMDA Journal Club

July 15, 2020

Kimberly Smoak, MSH, QIDP – Special Guest

Diane Sanders-Cepeda, DO, CMD – Presenter

Agenda



- COVID-19 State of the State
- Clinical & Regulatory Updates
- Open Discussion

World Map

U.S. Map

Critical Trends

COVID-19 Dashboard by the Center for Systems Science and Engineering (CSSE) at Johns Hopkins University (JHU)

Total Confirmed 13,360,401

Confirmed Cases by Country/Region/Sovereignty

3,434,636	US
1,926,824	Brazil
936,181	India
745,197	Russia
333,867	Peru
319,493	Chile
311,486	Mexico
298,292	South Africa
292,931	United Kingdom
264,561	Iran
256,619	Spain
255,769	Pakistan
243,344	Italy



Cumulative Confirmed Cases Active Cases Incidence Rate Case-Fatality Ratio Testing Rate Hospitalization Rate

Global Deaths 579,509

136,493 deaths	US
74,133 deaths	Brazil
45,053 deaths	United Kingdom
36,327 deaths	Mexico
34,984 deaths	Italy
30,032 deaths	France
28,400 deaths	Spain

US State Level Deaths, Recovered

32,408 deaths, 71,692 recovered	New York US
15,582 deaths, 31,318 recovered	New Jersey US
8,340 deaths, 94,347 recovered	Massachusetts US
7,419 deaths, recovered	Illinois US
7,243 deaths, recovered	California US



Confirmed Logarithmic Daily Cases

188 countries/regions

Lancet Inf Dis Article: Here. Mobile Version: Here. Lead by JHU CSSE. Technical Support: Esri Living Atlas team and JHU APL. Financial Support: JHU and NSF. Resource support: Slack, Github and AWS. Click here to donate to the CSSE dashboard team, and other JHU COVID-19

Last Updated at (M/D/YYYY) 7/15/2020 10:34:37 AM

World Map

U.S. Map

Critical Trends

COVID-19 Dashboard by the Center for Systems Science and Engineering (CSSE) at Johns Hopkins University (JHU)

Total Confirmed

3,434,636

Confirmed Cases by Country/Region/Sovereignty

3,434,636 US

1,926,824 Brazil

936,181 India

745,197 Russia

333,867 Peru

319,493 Chile

311,486 Mexico

298,292 South Africa

292,931 United Kingdom

264,561 Iran

256,619 Spain

255,769 Pakistan

243,344 Italy



Cumulative Confirmed Cases

Active Cases

Incidence Rate

Case-Fatality Ratio

Testing Rate

Hospitalization Rate

Global Deaths

136,493

136,493 deaths US

US State Level Deaths, Recovered

32,408 deaths, 71,692 recovered New York US

15,582 deaths, 31,318 recovered New Jersey US

8,340 deaths, 94,347 recovered Massachusetts US

7,419 deaths, recovered Illinois US

7,243 deaths, recovered California US

Global Deaths

US Deaths, Recovered



Confirmed

Logarithmic

Daily Cases

188

countries/regions

Lancet Inf Dis Article: Here. Mobile Version: Here.

Lead by JHU CSSE. Technical Support: Esri Living Atlas team and JHU APL. Financial Support: JHU and NSF. Resource support: Slack, Github and AWS. Click here to donate to the CSSE dashboard team, and other JHU COVID-19 Research Efforts. FAQ. Read more in this blog. Contact US.

Last Updated at (M/D/YYYY)

7/15/2020, 10:34:37 AM

Admin0

Admin1

Admin2

To see results within this country, select a subnational location

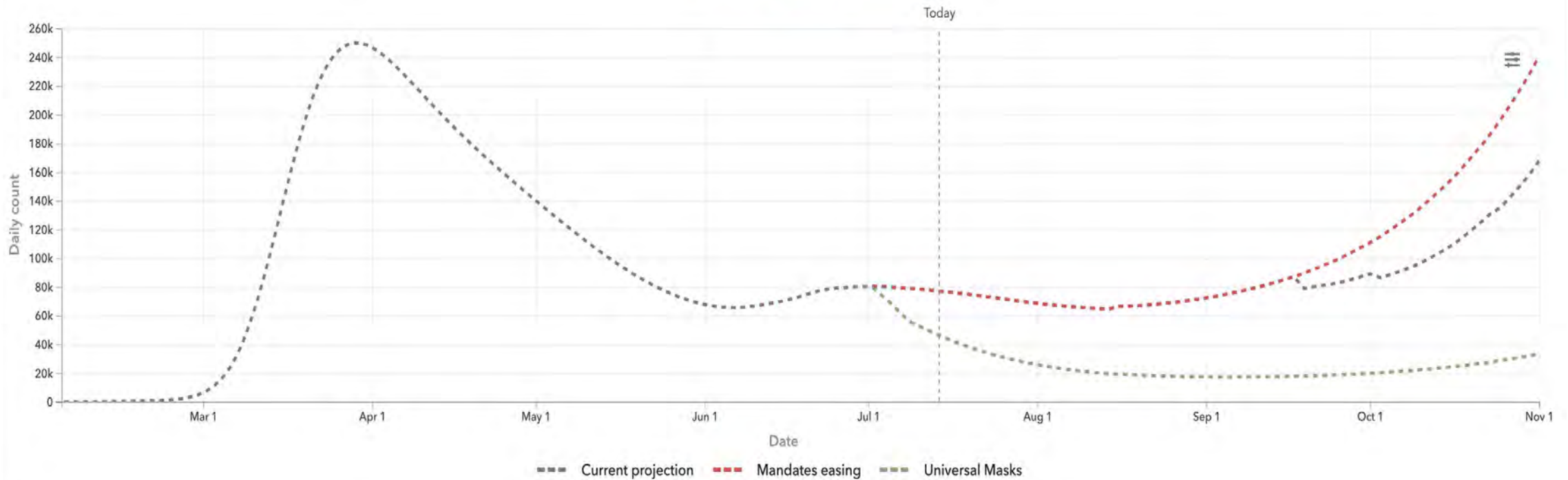
Total deaths Daily deaths Infections and testing Hospital resource use Social distancing

Trend Compare Map

Daily infections and testing

Estimated infections Confirmed infections Tests

Scenario Projection X Easing X Masks X



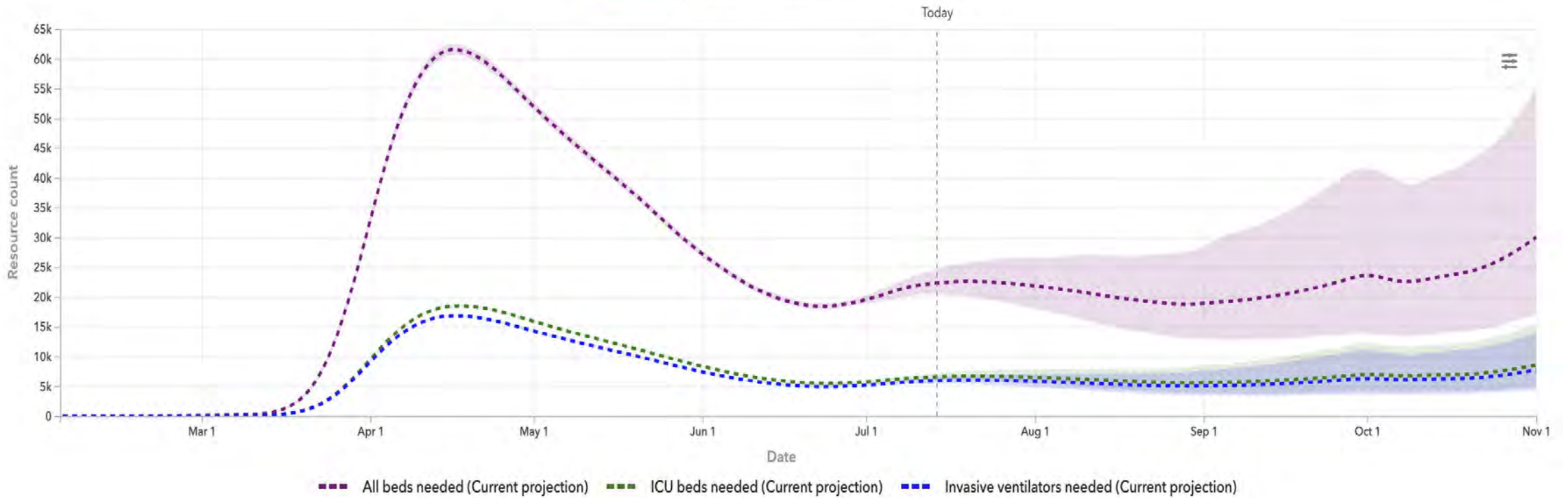
To see results within this country, select a subnational location

Total deaths Daily deaths Infections and testing Hospital resource use Social distancing

Trend Compare Map

Hospital resource use

All resources All beds ICU beds Invasive ventilators



All resources specific to COVID-19 patients.
Shaded area indicates 95% uncertainty interval. ⓘ

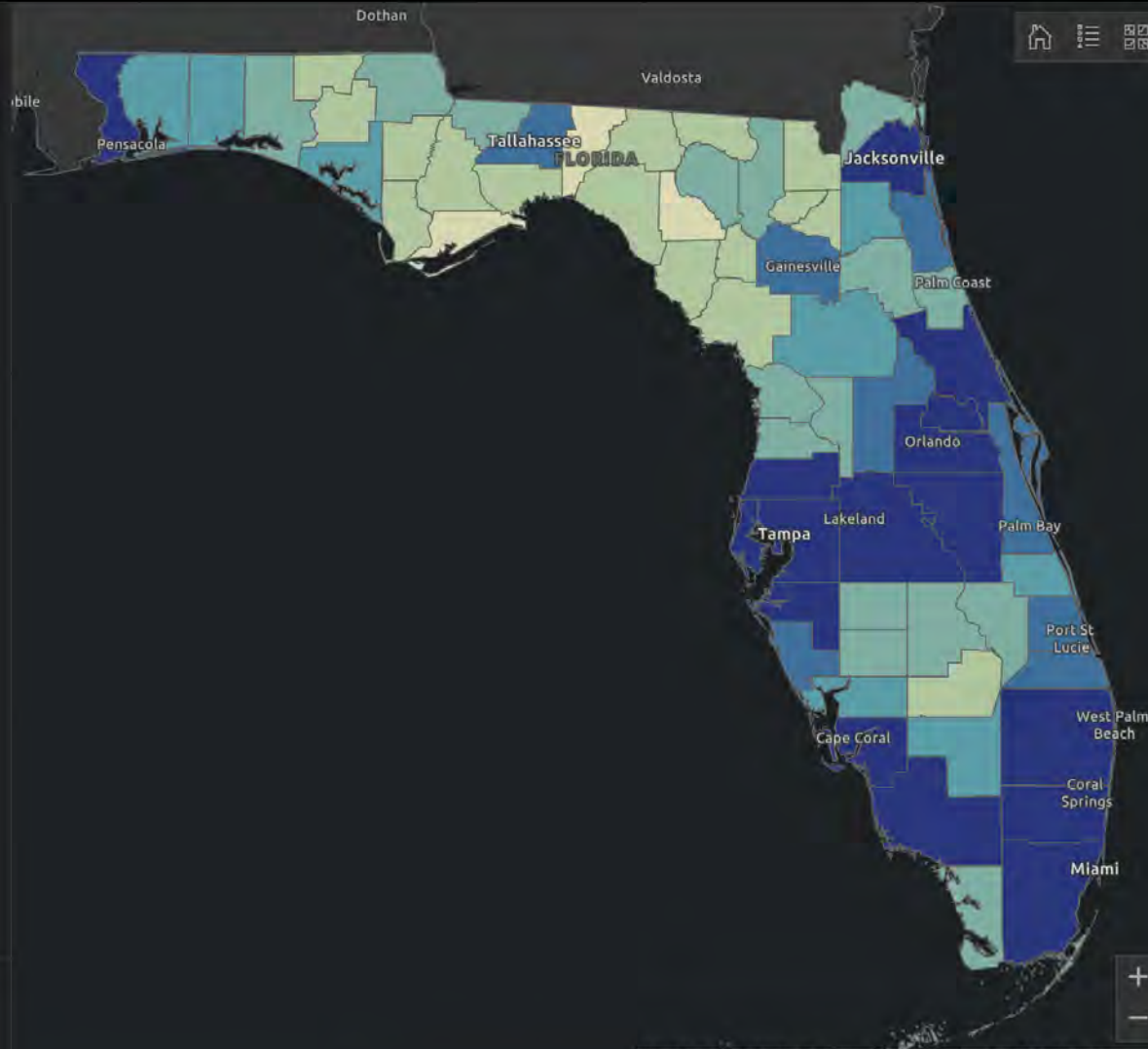
Total Cases
301,810

Cumulative Data for Florida Residents:

Positive Residents
297,876

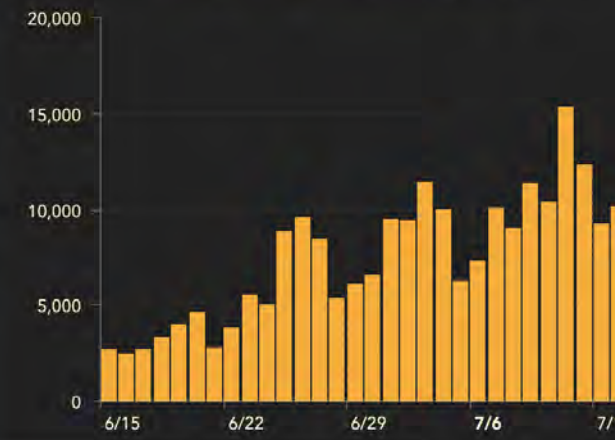
Resident Hospitalizations
19,334

Florida Resident Deaths	Non-Resident Deaths
4,521	105



Recent Data for Florida Residents (Last 30 Days):

New Cases of Residents by Day



Resident Deaths by Date of Death

No Data

FDEP, Esri, HERE, Garmin, FAO, NOAA, USGS, EPA, NP...

Data is updated every day at approximately 11 A.M. ET.
[Click here to access and download data](#)

⚠ The Deaths by Day chart shows the total number of Florida residents with confirmed COVID-19 that died on each calendar day (12:00 AM - 11:59 PM). Death data often has significant delays in reporting, so data within the past two weeks will be updated.



COVID-19 Impact: Clinical & Regulatory Updates

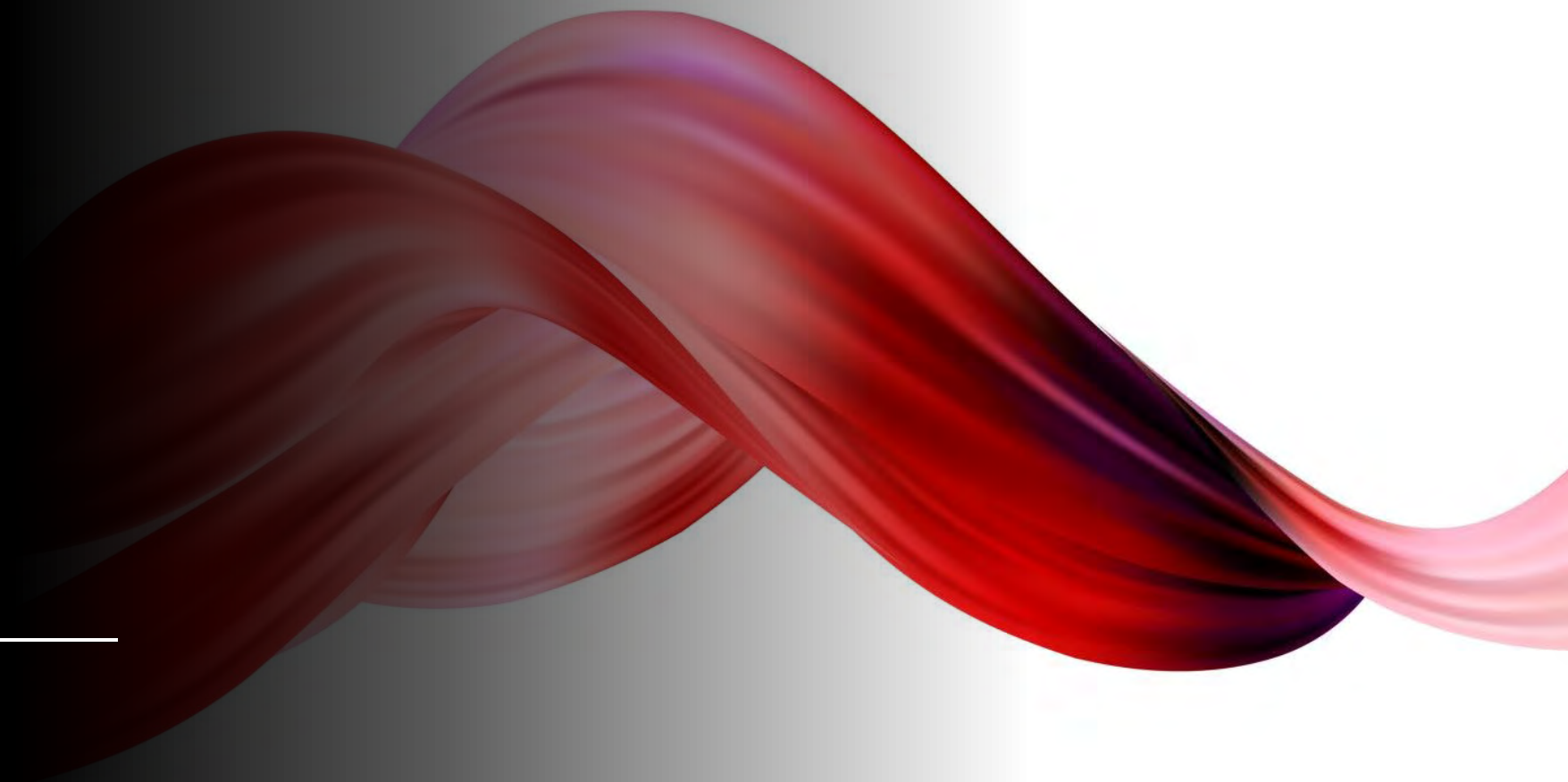
Kimberly Smoak, MSH, QIDP

Chief of Field Operations, Health Quality Assurance

Florida's Agency for Health Care Administration

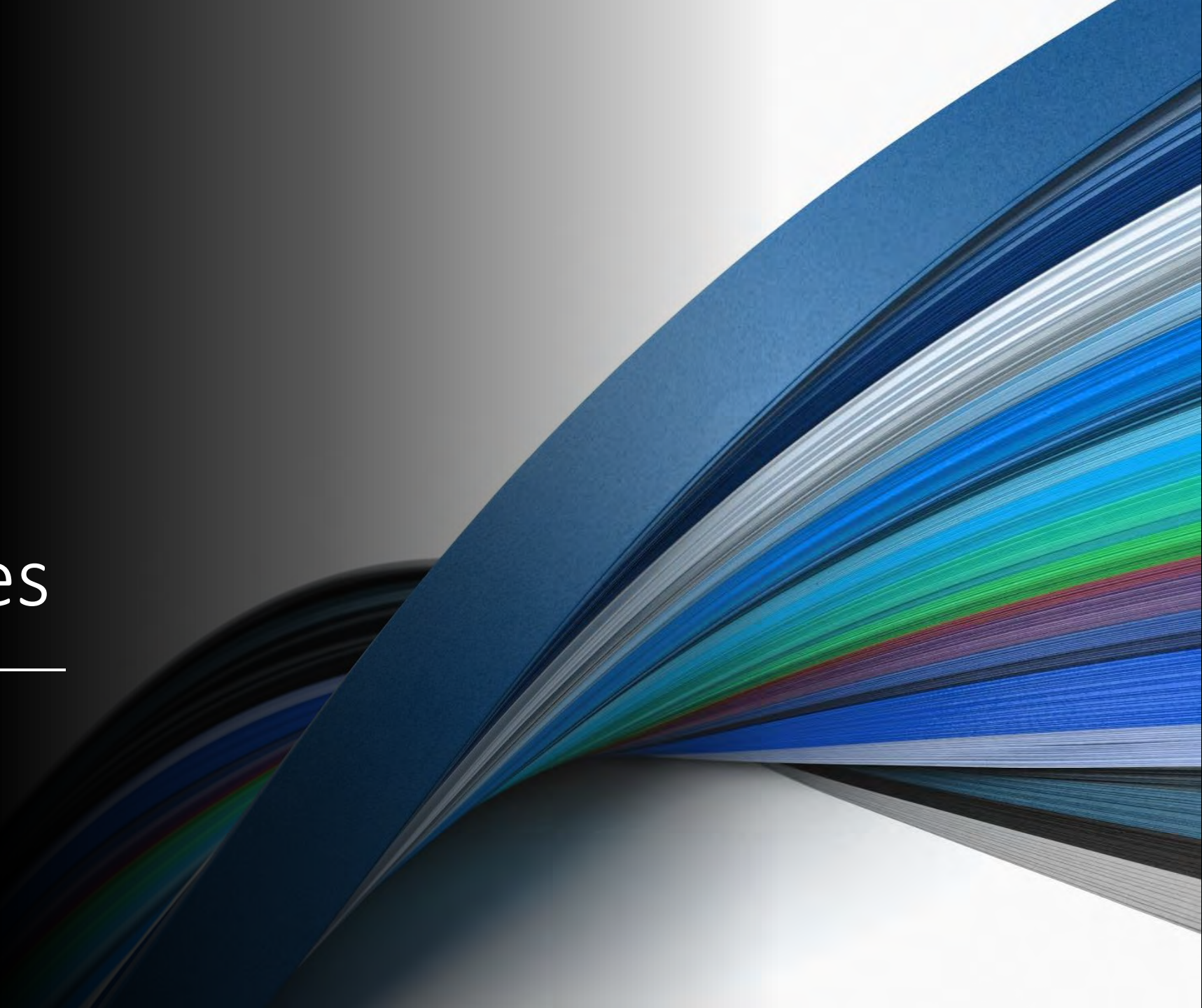


Metrics to Share





Dedicated COVID Facilities





Emergency Rule for Testing



Testing Residents





Facility Surveys in the Age of COVID





The Facility's Clinical Team

Engagement Opportunities





Open Discussion



Questions & Comments

Diane Sanders-Cepeda, DO CMD
Diane_sanders-cepeda@uhc.com





THE FLORIDA SOCIETY
FOR POST-ACUTE AND
LONG-TERM
CARE MEDICINE

**400 Executive Center Drive, Suite 208
West Palm Beach, FL 33401**

www.fmda.org; www.bestcarepractices.org



This meeting has been recorded and will be available at www.fmda.org/journalclub.php