



# COVID-19 Impact: Post COVID Sequelae and the Long Road to Recovery

This meeting will be recorded and will be available at [www.fmda.org/journalclub.php](http://www.fmda.org/journalclub.php)



# FMDA Journal Club

July 21, 2020

**Elaine Healy, MD, CMD; Elizabeth VandeVelde, ARNP – Special Guests**

**Diane Sanders-Cepeda, DO, CMD – Presenter**

# Agenda

- COVID-19 State of the State
- Post COVID Sequelae Discussion
- Open Discussion

World Map

U.S. Map

Critical Trends

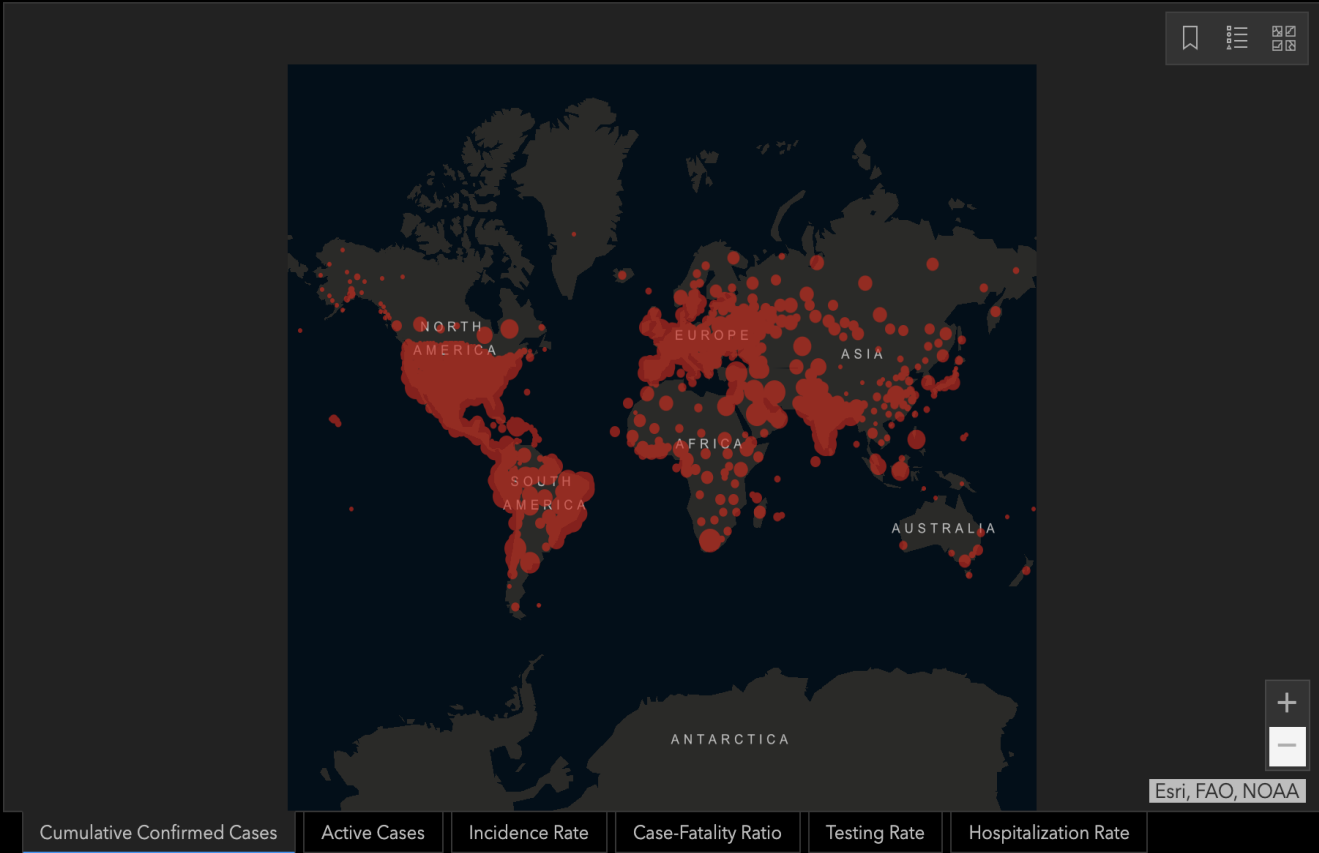
COVID-19 Dashboard by the Center for Systems Science and Engineering (CSSE) at Johns Hopkins University (JHU)

Total Confirmed 14,730,716

Confirmed Cases by Country/Region/Sovereignty

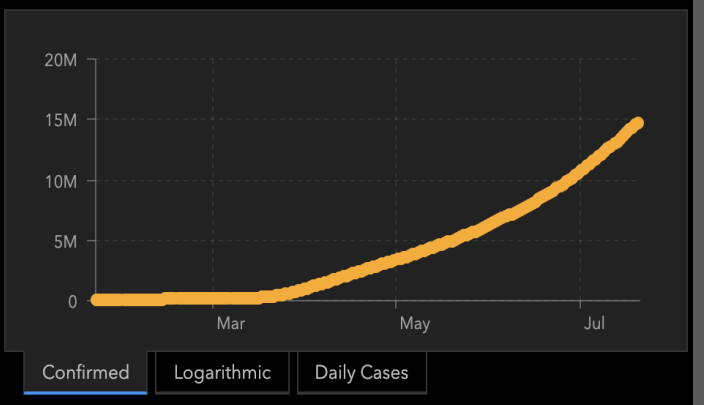
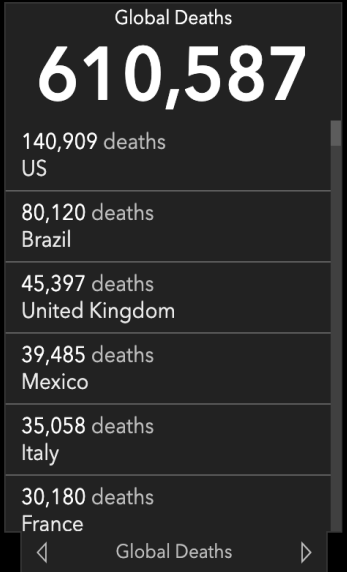
3,831,450	US
2,118,646	Brazil
1,155,338	India
782,040	Russia
373,628	South Africa
353,590	Peru
349,396	Mexico
330,930	Chile
296,944	United Kingdom
278,827	Iran
266,096	Pakistan
264,836	Spain

Last Updated at (M/D/YYYY) 7/21/2020, 8:42:39 AM



188 countries/regions

Lancet Inf Dis Article: [Here](#). Mobile Version: [Here](#).  
 Lead by JHU CSSE. Technical Support: [Esri Living Atlas team](#) and [JHU APL](#). Financial Support: JHU, NSF, Bloomberg Philanthropies and Stavros Niarchos Foundation. Resource support: [Slack](#), [Github](#) and [AWS](#). Click [here](#) to donate to the CSSE dashboard team, and other JHU COVID-19 Research Efforts. [FAO](#). Read more in



World Map

U.S. Map

Critical Trends

COVID-19 Dashboard by the Center for Systems Science and Engineering (CSSE) at Johns Hopkins University (JHU)

Total Confirmed

3,831,591

Confirmed Cases by Country/Region/Sovereignty

- 3,831,591 US
- 2,118,646 Brazil
- 1,155,338 India
- 782,040 Russia
- 373,628 South Africa
- 353,590 Peru
- 349,396 Mexico
- 330,930 Chile
- 296,944 United Kingdom
- 278,827 Iran
- 266,096 Pakistan
- 264,836 Spain



Cumulative Confirmed Cases Active Cases Incidence Rate Case-Fatality Ratio Testing Rate Hospitalization Rate

Global Deaths

140,914

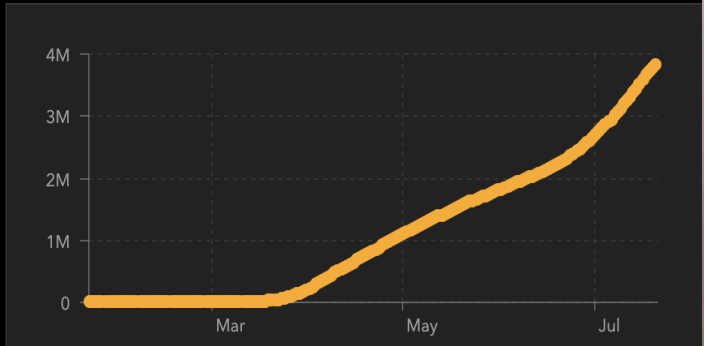
140,914 deaths US

US State Level Deaths, Recovered

- 32,506 deaths, 72,229 recovered New York US
- 15,715 deaths, 31,448 recovered New Jersey US
- 8,433 deaths, 95,390 recovered Massachusetts US
- 7,773 deaths, recovered California US
- 7,494 deaths, recovered US

Global Deaths

US Deaths, Recovered



Confirmed Logarithmic Daily Cases

188

countries/regions

Lancet Inf Dis Article: [Here](#). Mobile Version: [Here](#).  
 Lead by JHU CSSE. Technical Support: [Esri Living Atlas team](#) and [JHU APL](#). Financial Support: JHU, NSF, Bloomberg Philanthropies and Stavros Niarchos Foundation. Resource support: [Slack](#), [Github](#) and [AWS](#).  
 Click [here](#) to donate to the CSSE dashboard team, and other JHU COVID-19 Research Efforts. [FAO](#). Read more in

Last Updated at (M/D/YYYY)

7/21/2020 9:35:48 AM

https://coronavirus.jhu.edu



# Florida's COVID-19 Data and Surveillance Dashboard

Florida Department of Health, Division of Disease Control and Health Protection

Select a County



# Total Cases

# 369,834

Cumulative Data for Florida Residents:

# Positive Residents

# 365,244

# Resident Hospitalizations

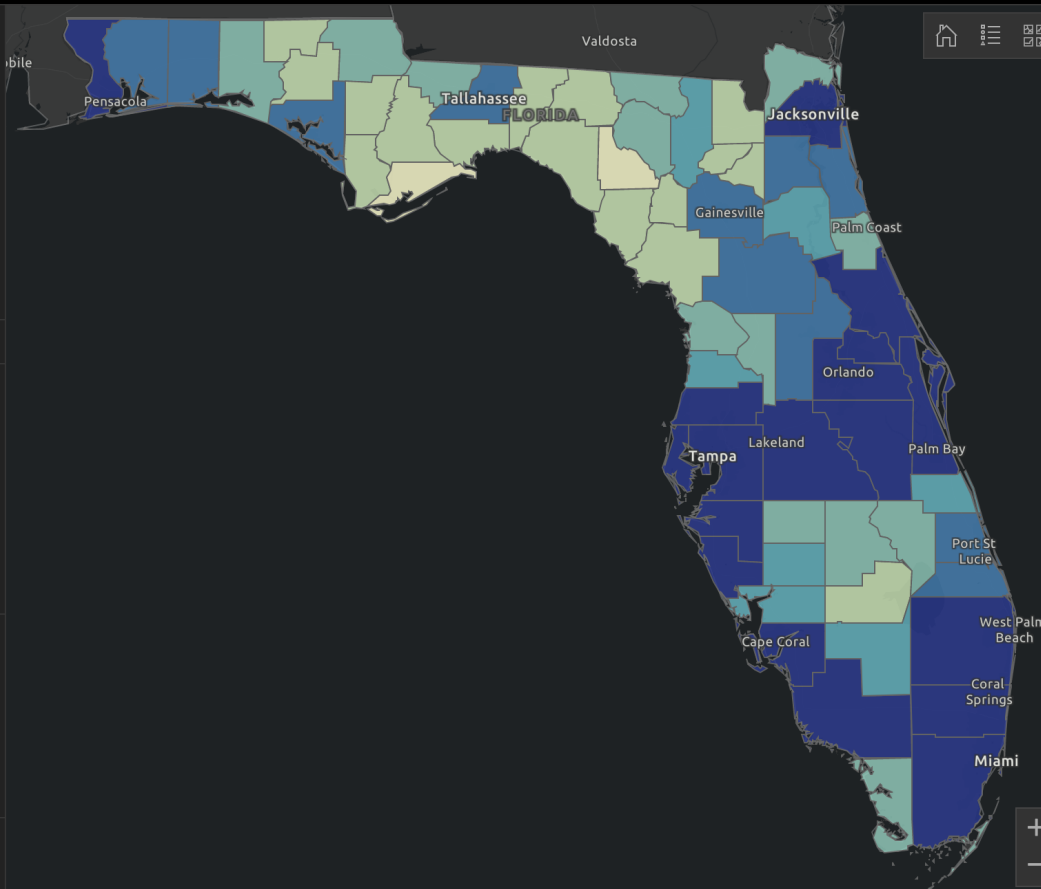
# 21,780

Florida Resident Deaths

# 5,206

Non-Resident Deaths

# 113



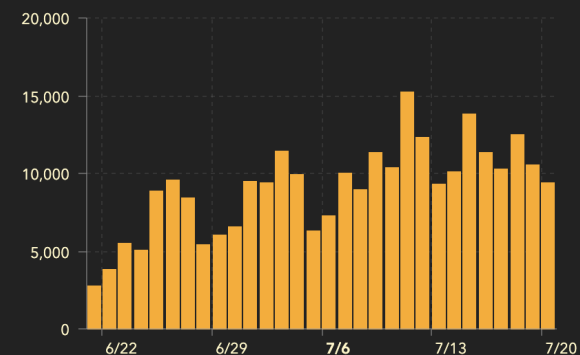
FDEP, Esri, HERE, Garmin, FAO, NOAA, USGS, EPA, NP...

Data is updated every day at approximately 11 A.M. ET.

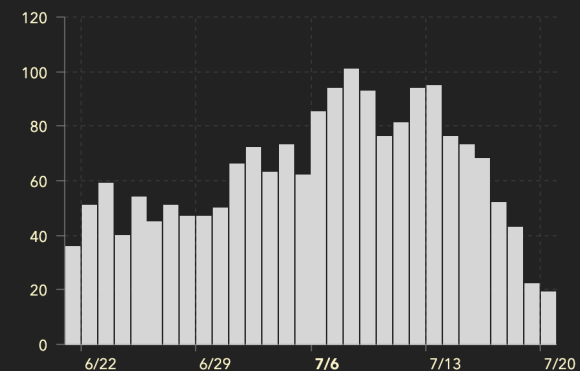
[Click here to access and download data](#)

## Recent Data for Florida Residents (Last 30 Days):

### New Cases of Residents by Day



### Resident Deaths by Date of Death

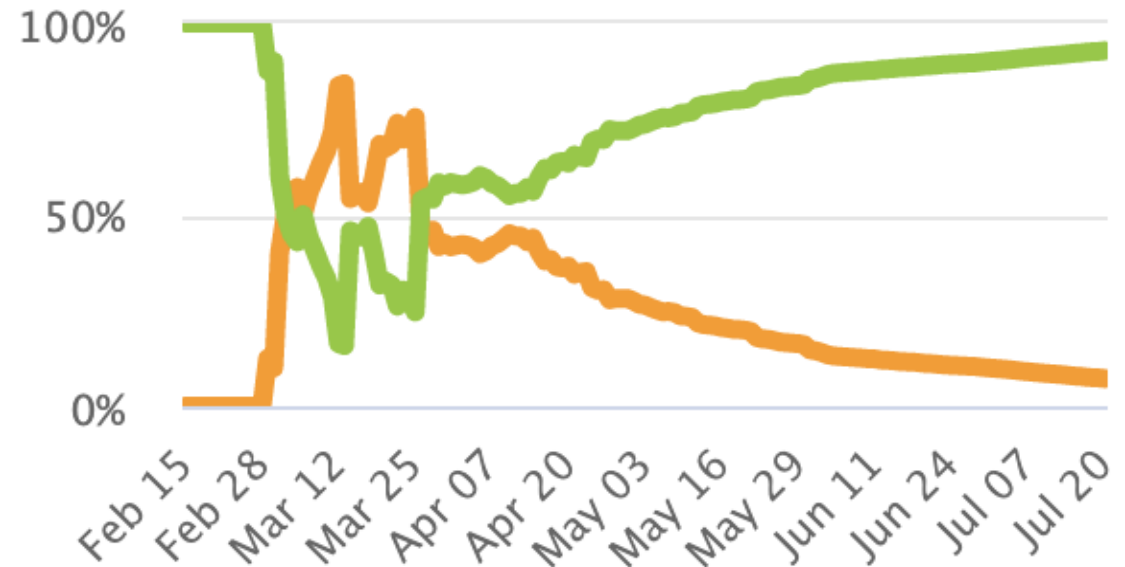


The Deaths by Day chart shows the total number of Florida residents with confirmed COVID-19 that died on each calendar day (12:00 AM - 11:59 PM). Death data often has significant delays in reporting, so data within the past two weeks will be updated

- Florida Cases
- Florida Testing
- Cases by County
- Cases by Zip Code
- Health Metrics
- USA and World



# Closed Cases



**1,995,207**

Cases which had an outcome:

**1,851,157 (93%)**  
Recovered / Discharged

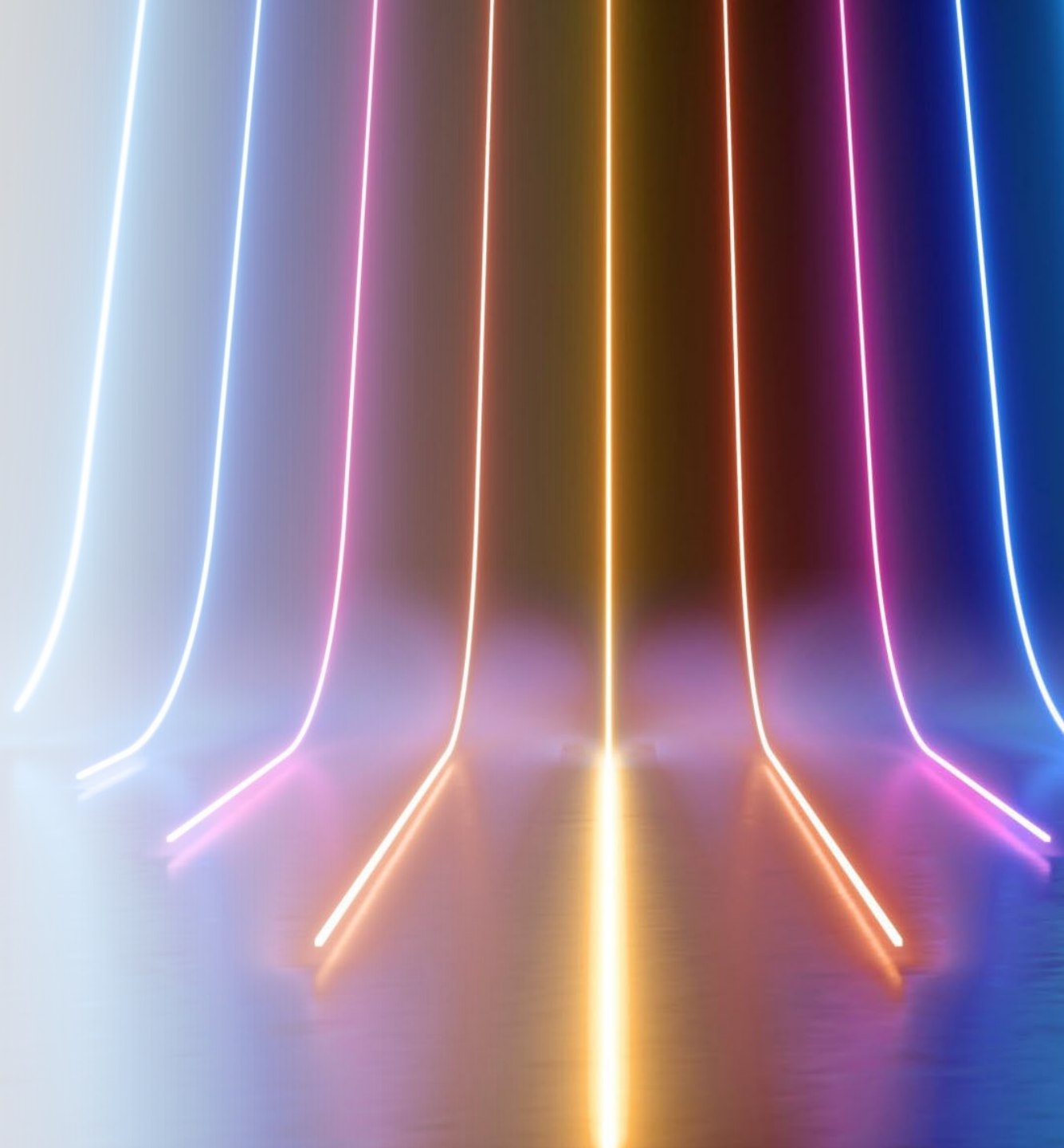
**144,050 (7%)**  
Deaths



# Post COVID Sequelae

---

The Long Road to Recovery







# Special Guests

---



**Elaine Healy, MD, CMD;  
Vice President of Medical Affairs and  
Medical Director at United Hebrew  
of New Rochelle**



**Elizabeth VandeVelde, RN, MSN,  
ANP-CRN, MSN,  
ANP-C;  
Clinical Service Manager, Optum**

Living the Experience





Learning from Experience |



# Road to Recovery

---





# Managing Complications

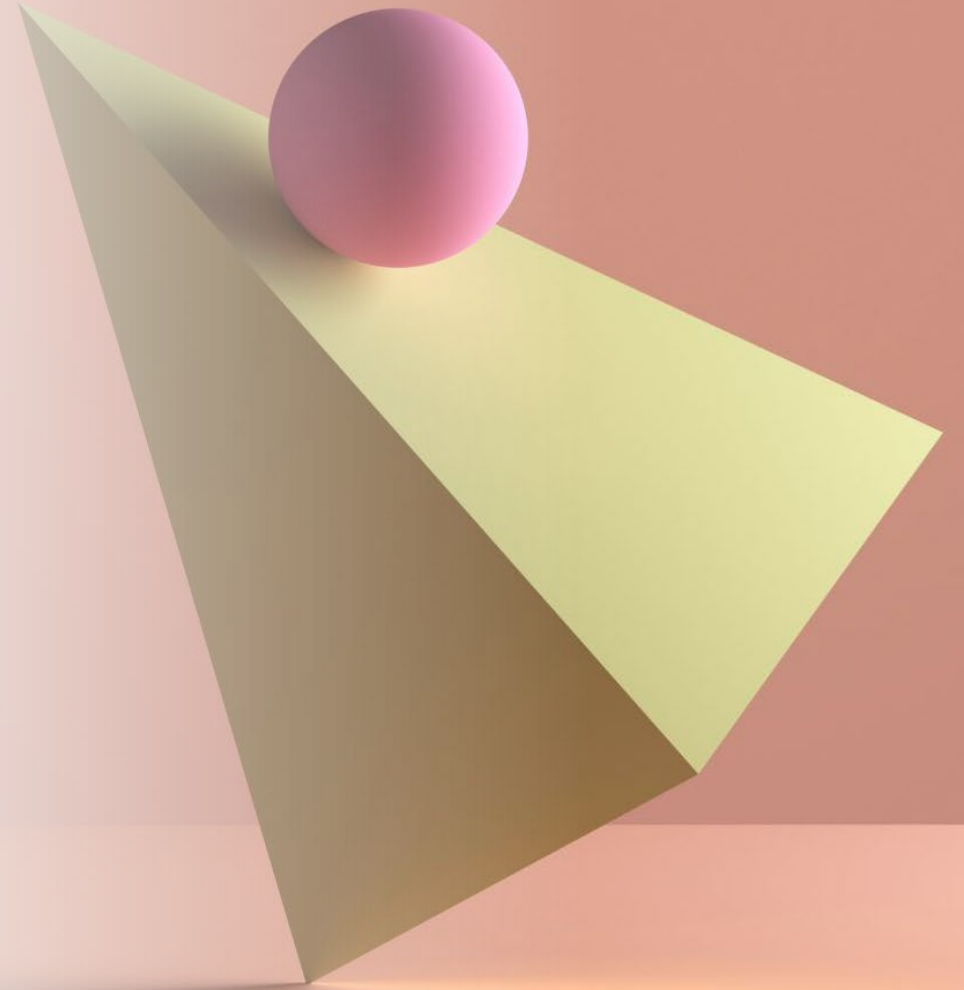
---





# Frailty & COVID

---





# Open Discussion

---



# Questions & Comments

---

Diane Sanders-Cepeda, DO CMD

[Diane\\_sanders-cepeda@uhc.com](mailto:Diane_sanders-cepeda@uhc.com)







THE FLORIDA SOCIETY  
FOR POST-ACUTE AND  
LONG-TERM  
CARE MEDICINE

**400 Executive Center Drive, Suite 208  
West Palm Beach, FL 33401**

**[www.fmda.org](http://www.fmda.org); [www.bestcarepractices.org](http://www.bestcarepractices.org)**



This meeting has been recorded and will be available at [www.fmda.org/journalclub.php](http://www.fmda.org/journalclub.php)