



COVID-19 Impact: Headwinds

This meeting will be recorded and will be available at www.fmda.org/journalclub.php



FMDA Journal Club

December 2, 2020

Diane Sanders-Cepeda, DO, CMD – Host

Agenda

- COVID State of the State
- COVID Headwinds
- Open Discussion

COVID-19 Dashboard by the Center for Systems Science and Engineering (CSSE) at Johns Hopkins University (JHU)

Global Cases

64,015,351

Cases by Country/Region/Sovereignty

- 13,728,154 US
- 9,499,413 India
- 6,386,787 Brazil
- 2,327,105 Russia
- 2,275,429 France
- 1,656,444 Spain
- 1,647,230 United Kingdom
- 1,620,901 Italy
- 1,432,570 Argentina
- 1,324,792 Colombia
- 1,122,362 Mexico
- 1,094,678 Germany
- 1,013,747 Poland

Admin0 Admin1 Admin2

Last Updated at (M/D/YYYY)

12/2/2020, 8:28 AM

191

countries/regions

Lancet Inf Dis Article: Here. Mobile Version: Here. Data sources: Full list. Downloadable database: GitHub, Feature Layer.

Lead by JHU CSSE. Technical Support: Esri Living Atlas team and JHU APL. Financial Support: JHU, NSF, Bloomberg Philanthropies and Stavros Niarchos Foundation. Resource support: Slack, Github and AWS.



Cumulative Cases Active Cases Incidence Rate Case-Fatality Ratio Testing Rate

Global Deaths

1,483,676

- 270,691 deaths US
- 173,817 deaths Brazil
- 138,122 deaths India
- 106,765 deaths Mexico
- 59,148 deaths United Kingdom
- 56,361 deaths Italy

Global Deaths

US State Level

Deaths, Recovered

- 34,662 deaths, 85,808 recovered New York US
- 22,114 deaths, 976,517 recovered Texas US
- 19,331 deaths, recovered California US
- 18,679 deaths, recovered Florida US
- 17,083 deaths, 44,013 recovered

US Deaths, Recovered



Daily Cases

COVID-19 Dashboard by the Center for Systems Science and Engineering (CSSE) at Johns Hopkins University (JHU)

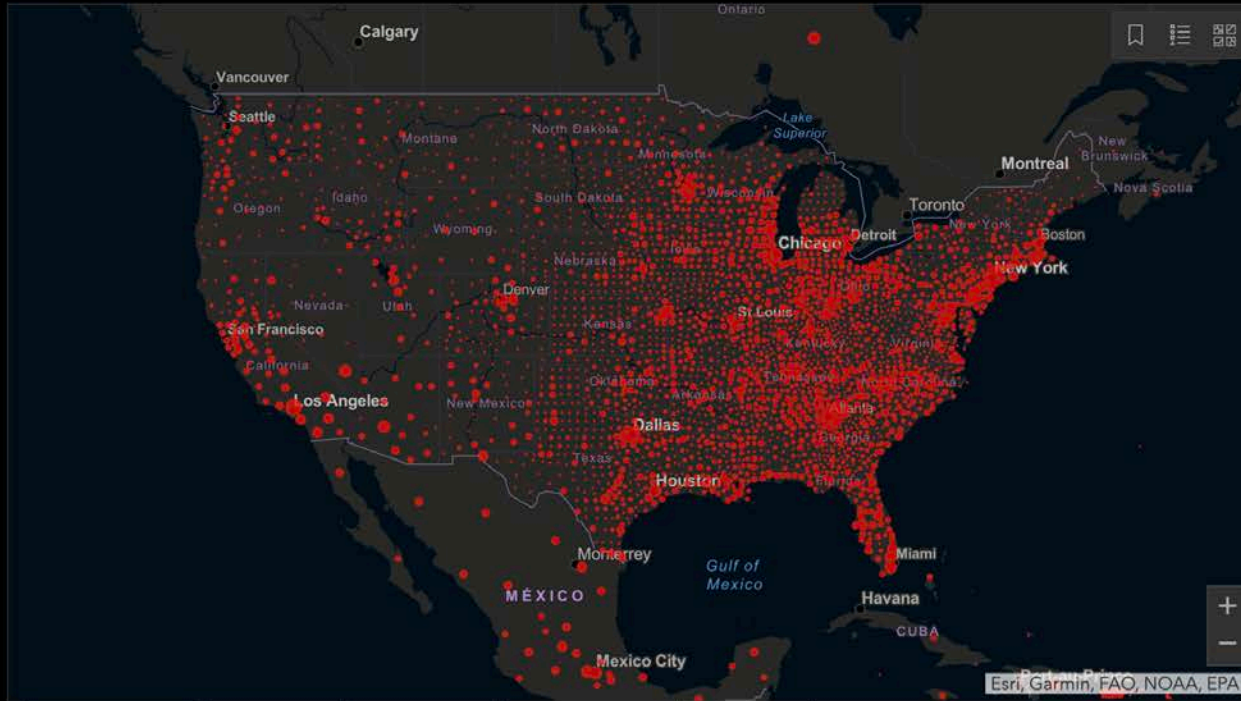
Global Cases 13,728,154

Cases by Country/Region/Sovereignty

- 13,728,154 US
- 9,499,413 India
- 6,386,787 Brazil
- 2,327,105 Russia
- 2,275,429 France
- 1,656,444 Spain
- 1,647,230 United Kingdom
- 1,620,901 Italy
- 1,432,570 Argentina
- 1,324,792 Colombia
- 1,122,362 Mexico
- 1,094,678 Germany
- 1,013,747 Poland

Admin0 Admin1 Admin2

Last Updated at (M/D/YYYY) 12/2/2020, 8:28 AM



Cumulative Cases Active Cases Incidence Rate Case-Fatality Ratio Testing Rate

191 countries/regions

Lancet Inf Dis Article: Here. Mobile Version: Here. Data sources: Full list. Downloadable database: GitHub, Feature Layer. Lead by JHU CSSE. Technical Support: Esri Living Atlas team and JHU APL. Financial Support: JHU, NSF, Bloomberg Philanthropies and Stavros Niarchos Foundation. Resource support: Slack, Github and AWS.

Global Deaths 270,691

270,691 deaths US

US State Level Deaths, Recovered

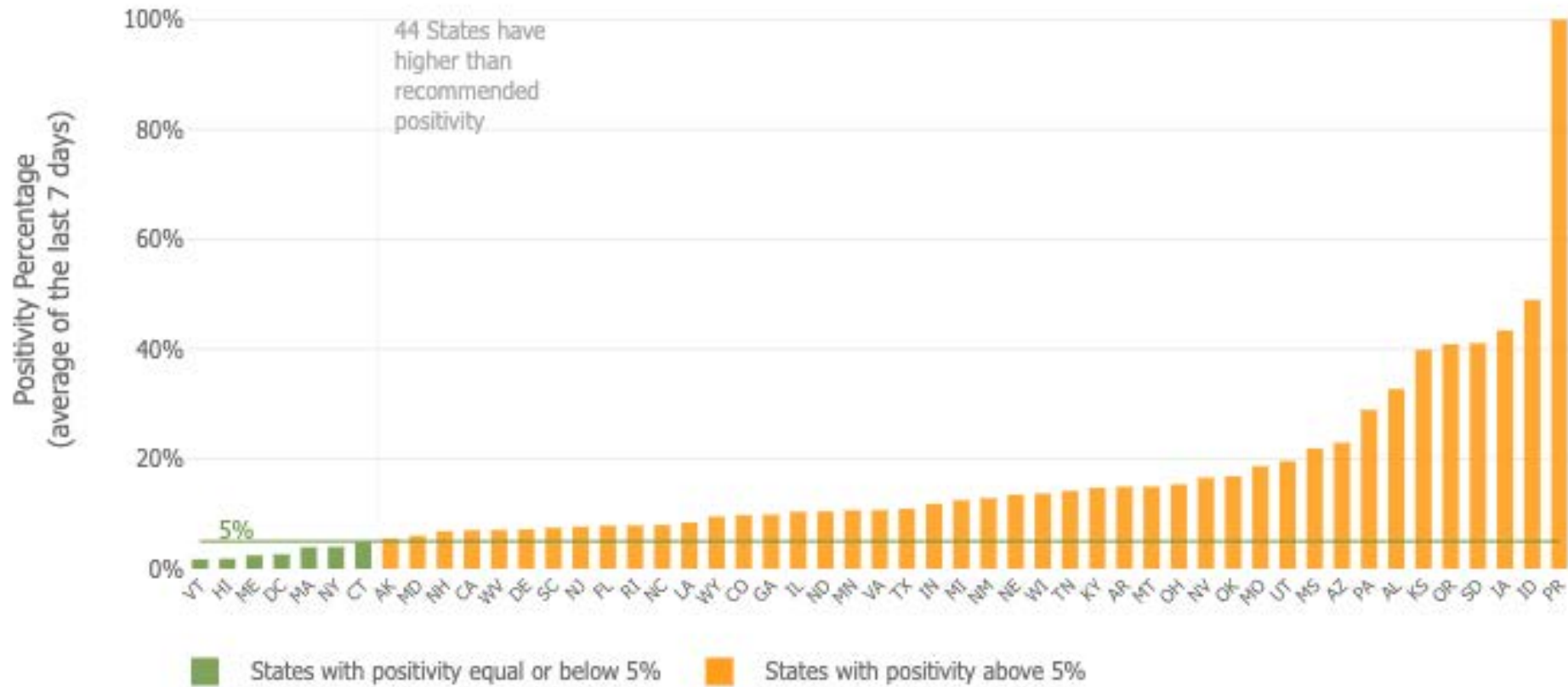
- 34,662 deaths, 85,808 recovered New York US
- 22,114 deaths, 976,517 recovered Texas US
- 19,331 deaths, recovered California US
- 18,679 deaths, recovered Florida US
- 17,083 deaths, 44,013 recovered

Global Deaths

US Deaths, Recovered



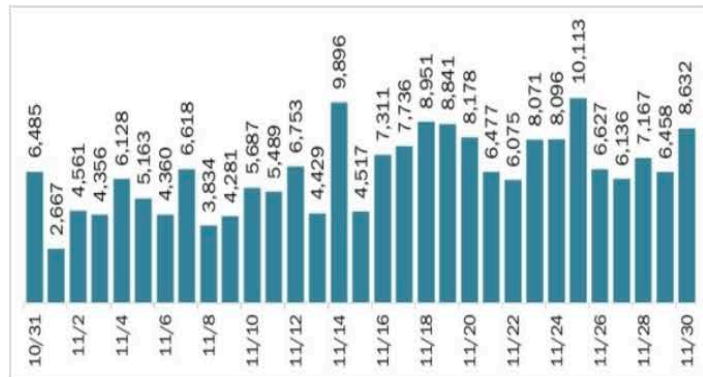
Daily Cases



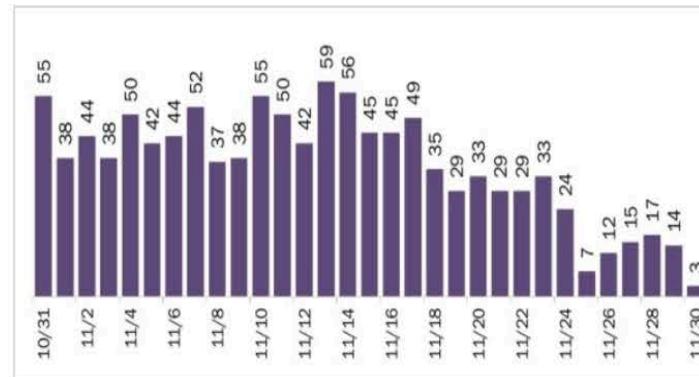
Current Situation in Florida

as of 9:25 am EDT, Tues. Dec. 1, 2020

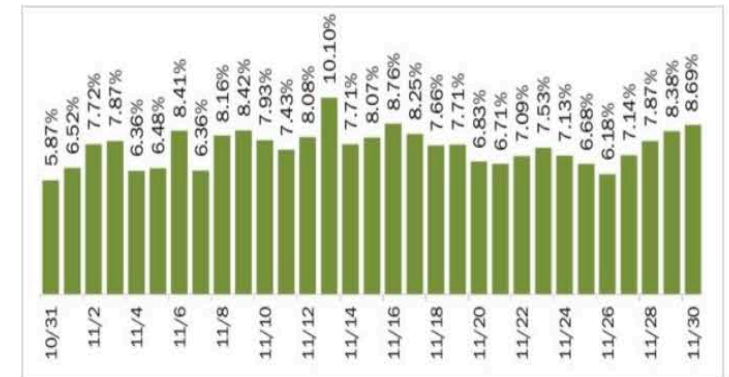
New Cases by Day



Death by Date of Death



New Case Positivity Rate





Florida's COVID-19 Data and Surveillance Dashboard

Florida Department of Health, Division of Disease Control and Health Protection

Select a County



Total Cases

1,008,166

Cumulative Data for Florida Residents:

Positive Residents

991,910

Resident Hospitalizations

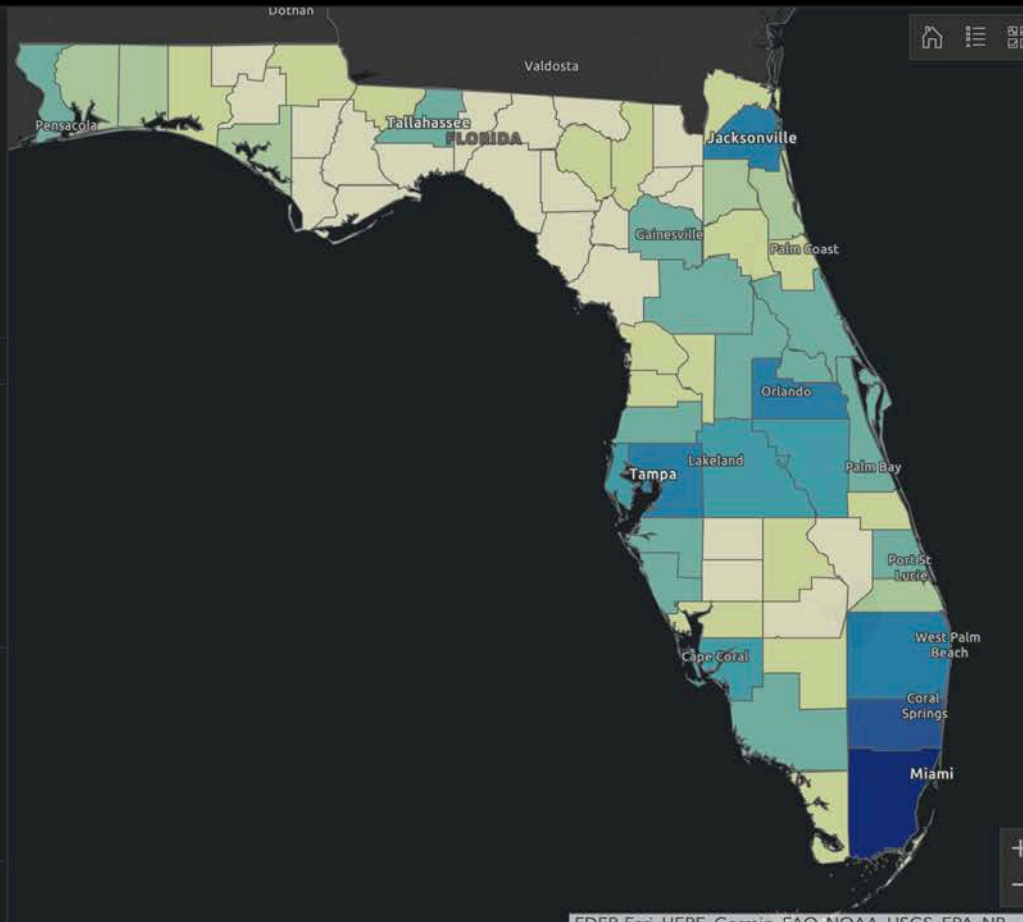
55,197

Florida Resident Deaths

18,679

Non-Resident Deaths

237

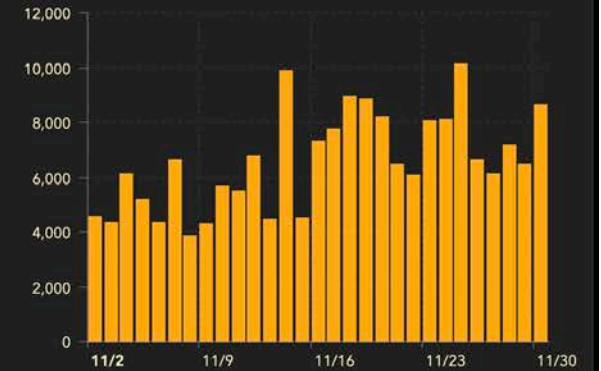


Comparison of counties is not possible because case data are not adjusted by population.

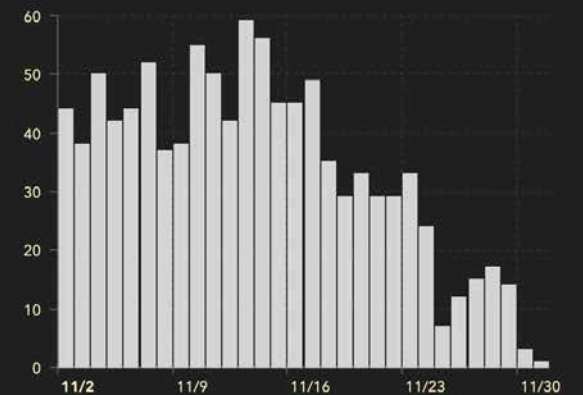
[Click here to access and download data](#)

Recent Data for Florida Residents (Last 30 Days):

New Cases of Residents by Day



Resident Deaths by Date of Death



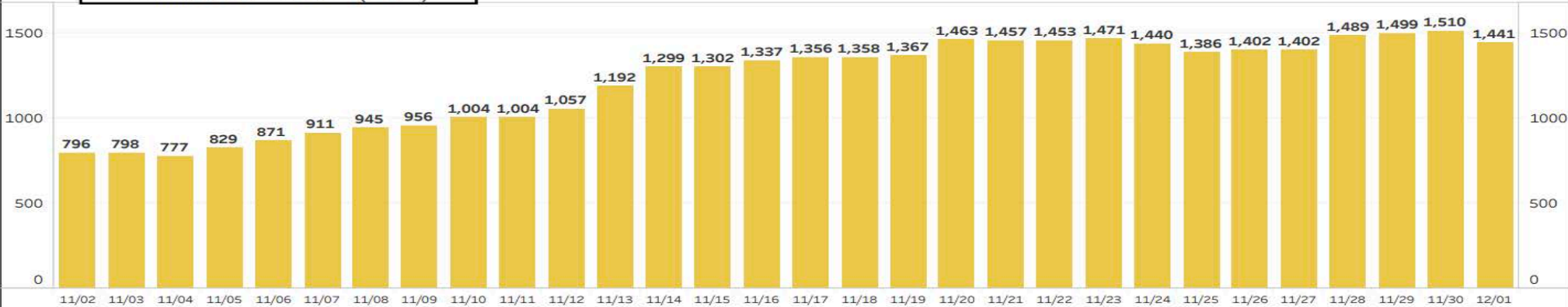
The Deaths by Day chart shows the total number of Florida residents with confirmed COVID-19 that died on each calendar day (12:00 AM - 11:59 PM). Death data often has significant delays in reporting, so data within the past two weeks will be updated

COVID in LTC

Last Updated: 11/30/2020 5:21:35 PM

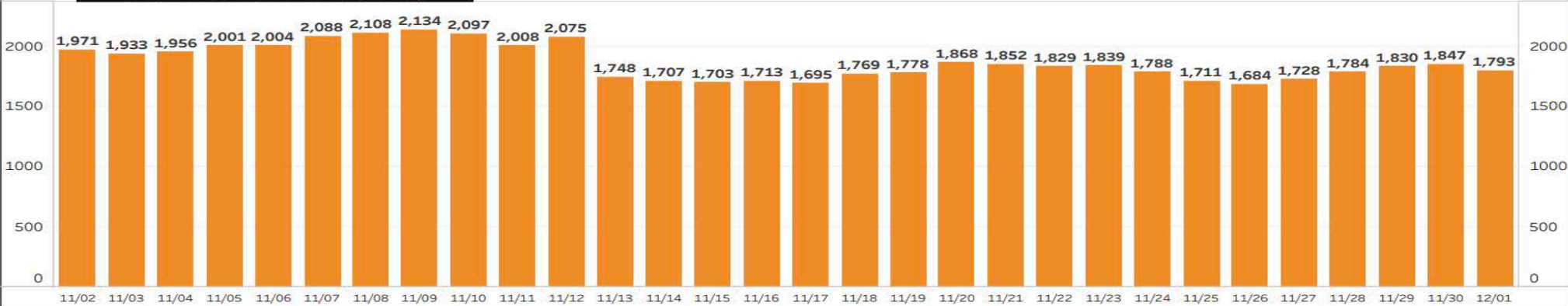
1,441 of 144,870 Total Residents Positive as of December 1 (0.99%)

COVID Positive Residents (SNF & ALF)



1,793 of 183,955 Total Staff Positive as of December 1 (0.97%)

COVID Positive Staff (SNF & ALF)



Data from AHCA ESS (Emergency Status System)

COVID positive residents and staff in Intermediate Care Facilities are not included in the bar chart totals. The data presented are reported by individual facilities and reporting errors may occur.



Headwinds

COVID practical challenges & considerations....

Commonly Asked Questions

- Newly approved treatments
- Vaccine Distribution
- LTC pharmacy roles in vaccine administration
- Rising COVID numbers with Decreased mortality
- “Long” COVID
- PALTC Preparedness & Future state



Monoclonal Antibodies



FDA NEWS RELEASE

Coronavirus (COVID-19) Update: FDA Authorizes Monoclonal Antibodies for Treatment of COVID-19

 Share

 Tweet

 LinkedIn

 Email

 Print

For Immediate Release: November 21, 2020



Lilly announces proof of concept data for neutralizing antibody LY-CoV555 in the COVID-19 outpatient setting

September 16, 2020

- **Primary endpoint of viral load change from baseline at day 11 was met for one of three doses; consistent effects of viral reduction seen at earlier time points**
- **Rate of hospitalizations and ER visits was 1.7 percent (5/302) for LY-CoV555 versus 6 percent (9/150) for placebo--a 72 percent risk reduction in this limited population**
- **LY-CoV555 was well-tolerated across all doses with no drug-related serious adverse events reported**

Monoclonal use in PALTC



110500 Little Patuxent Parkway
Suite 210
Columbia, MD 21044-3596
(410) 740-9743

Washington DC
(301) 596-5774

Toll Free
(800) 876-AMDA

Fax
(410) 740-4572

www.paltc.org

President
David A. Nace, MD, MPH, CMD
Wexford, PA

President-Elect
Karl E. Steinberg, MD, HMDC, CMD
Oceanside, CA

November 6, 2020

Hon. Alex Azar
Secretary
Department of Health and Human Services
Washington, DC

Dear Secretary Azar,

We are grateful for the Federal government's rapid actions in developing vaccines and therapeutics in responding to the COVID-19 crisis. In particular, we strongly believe that monoclonal antibody (mAb) therapy holds great promise to save lives and reduce suffering in our nursing home population.

AMDA – The Society for Post-Acute and Long-Term Care Medicine is the only national medical specialty society representing the community of over 50,000 medical directors, physicians, nurse practitioners, physician assistants, and other practitioners working in the various post-acute and long-term care (PALTC) settings. The Society's 5,500 members work in skilled nursing facilities, long-term care and assisted living communities, CCRCs, home care, hospice, PACE programs, and other settings.

The Study at a Glance

The BLAZE-2 Study is available at up to 2000 long-term care facilities across the US. If you are a resident or staff member at a participating facility, you may have the opportunity to take part in this important research. Staff members in quarantine can arrange for study appointments to take place in their home, rather than at their facility.



Trial

CONDITION

COVID-19

POTENTIAL TREATMENT UNDER STUDY

LY-CoV555

LY-CoV555 + LYCoV016



What's Involved?

MAXIMUM TRIAL LENGTH

3 or 6 months, depending on COVID-19 status

APPOINTMENTS

At your facility



Who Qualifies?

COVID-19 STATUS

Negative or positive test result at start of study

AGES

18+



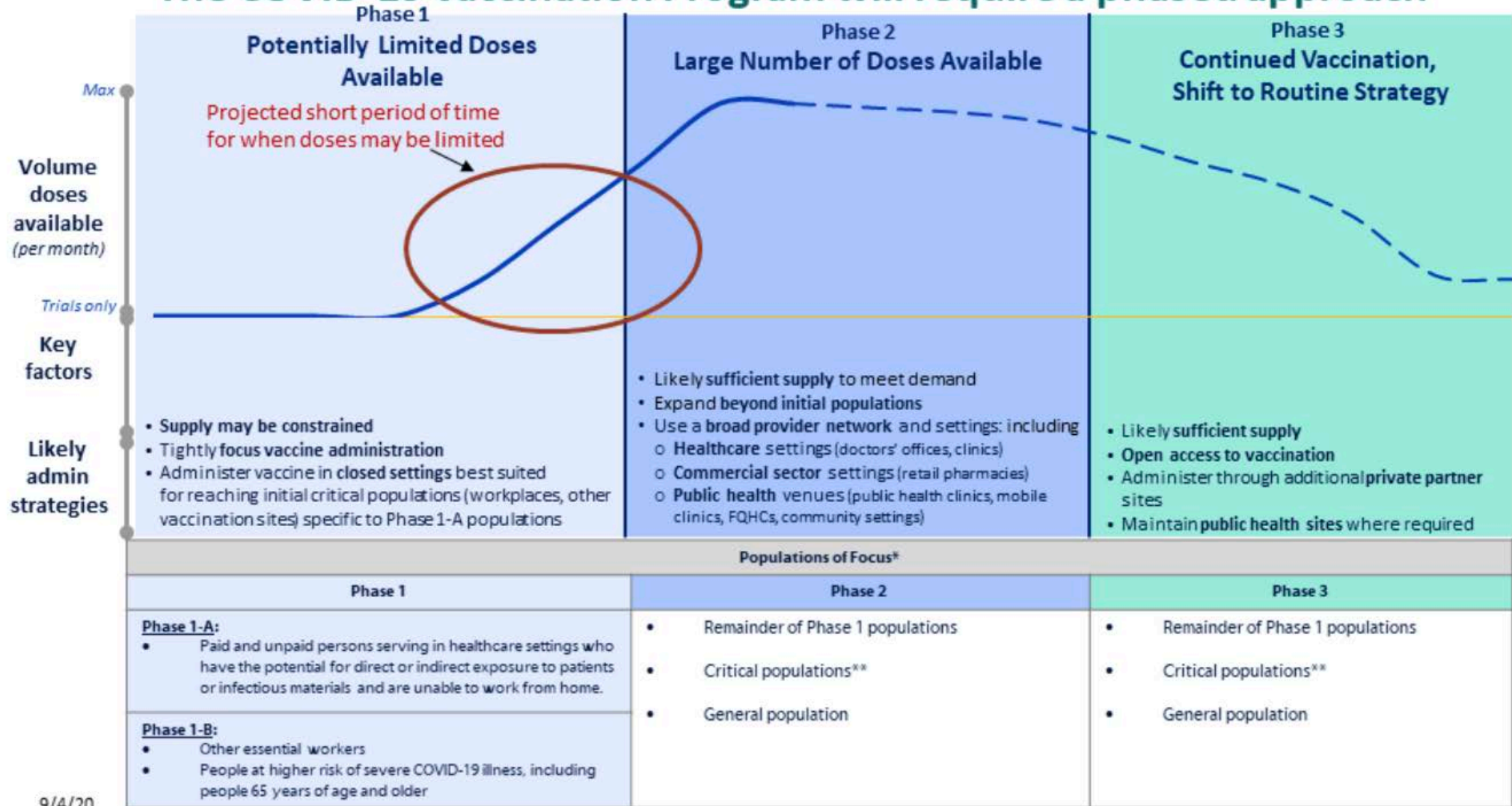
Revisiting Vaccine Preparedness



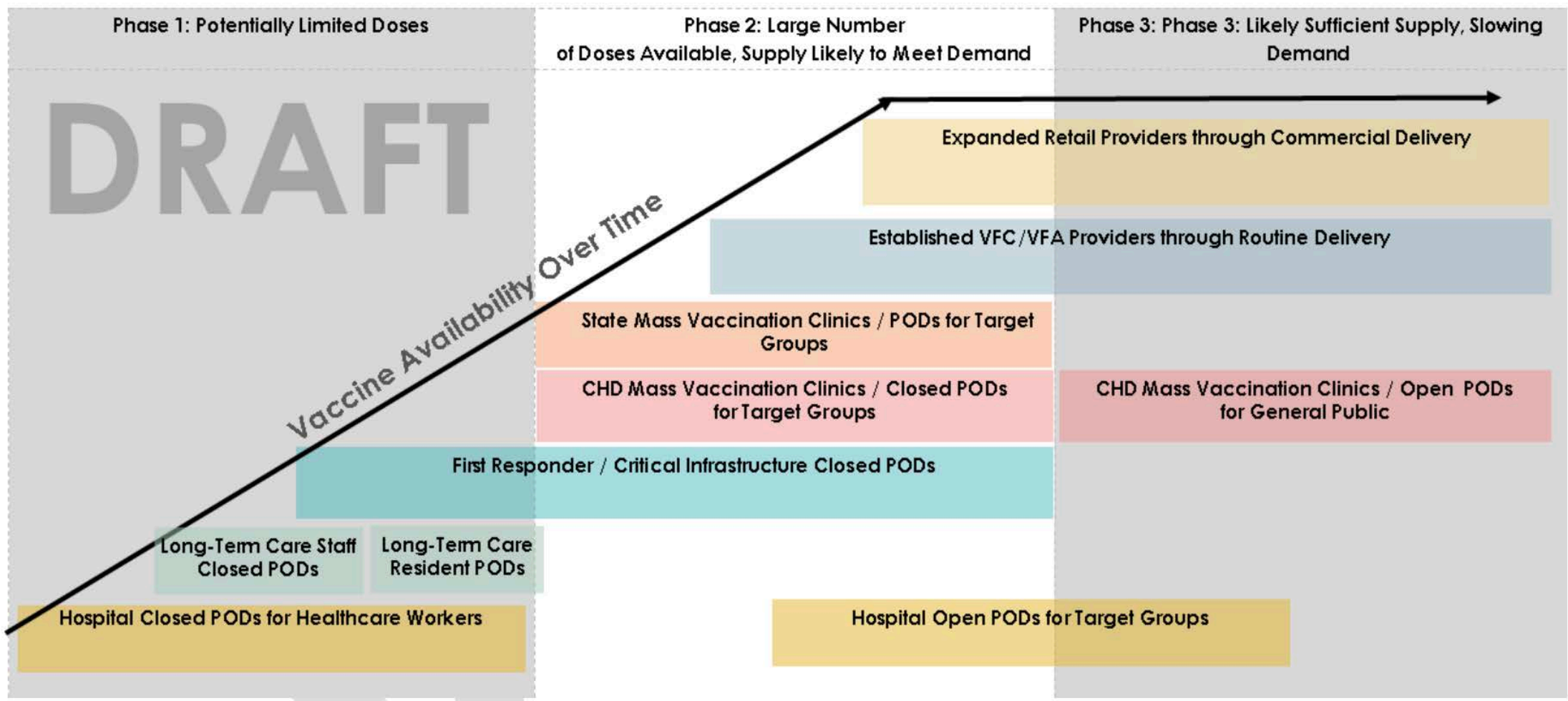
COMPLIANCE

HHS Inks Deal with CVS, Walgreens to Distribute COVID- 19 Vaccines to Nursing Homes [UPDATED]

The COVID-19 Vaccination Program will require a phased approach



COVID-19 Time-Phased Vaccination Strategy



COMPLIANCE

CDC Votes to Prioritize Nursing Home Residents, Health Care Workers for COVID Vaccine

By Maggie Flynn | December 1, 2020

 Alex Spanko / Aging Media Network



World

[Africa](#)

[Americas](#)

[Asia](#)

[Australia](#)

[China](#)

[Europe](#)

[India](#)

[Middle East](#)

[United Kingdom](#)

[LIVE TV](#)

[Edition](#)

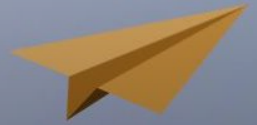


UK becomes first country to approve Pfizer's Covid-19 vaccine, first shots roll out next week

By Emma Reynolds and Lindsay Isaac, CNN

Updated 5:17 AM ET, Wed December 2, 2020

Why is mortality decreasing as cases are rising?

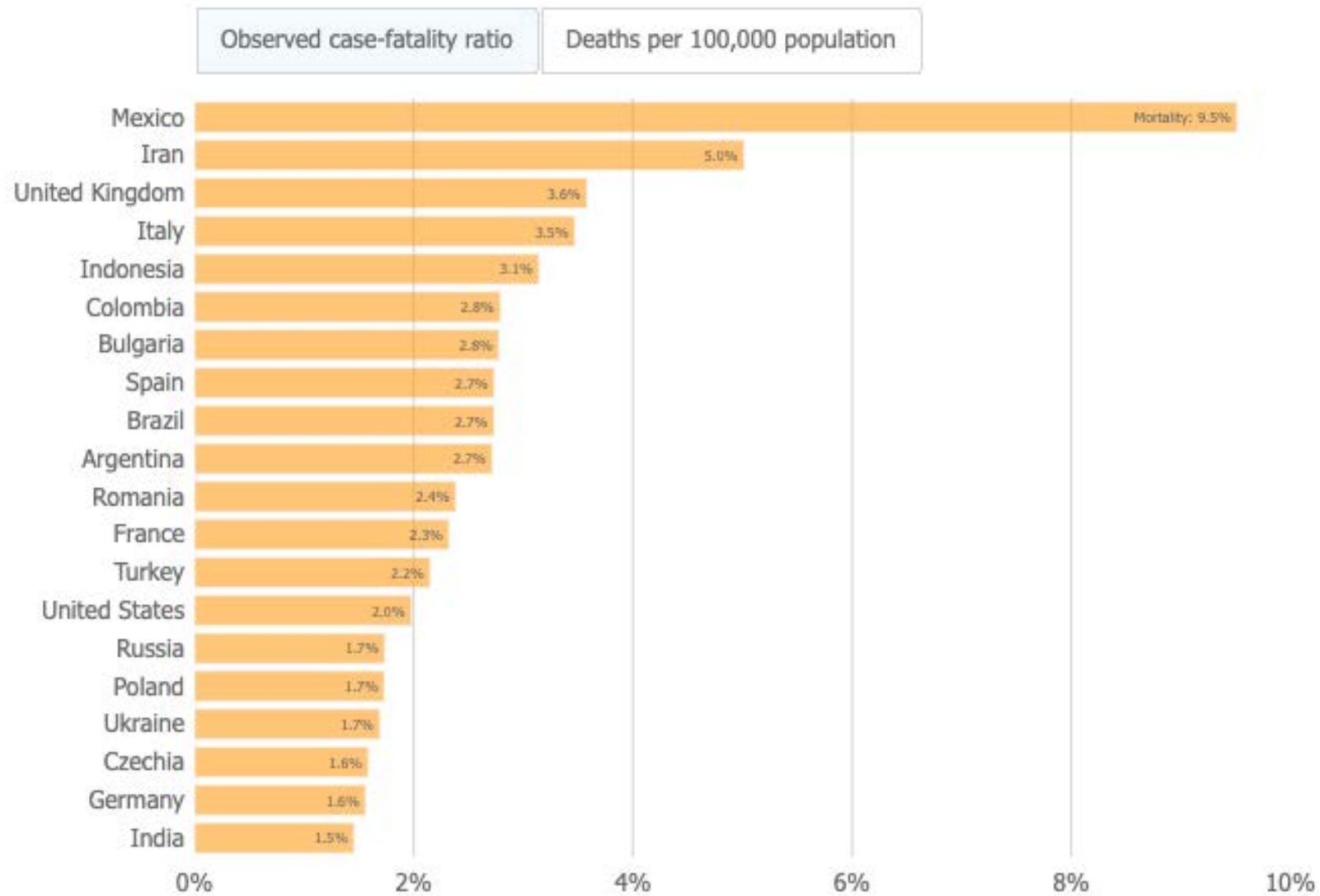


ONLINE FIRST OCTOBER 23, 2020—BRIEF REPORT

Trends in COVID-19 Risk-Adjusted Mortality Rates

Leora I Horwitz, MD, MHS^{1,2,3*}, Simon A Jones, PhD^{1,2}, Robert J Cerfolio, MD⁴, Fritz Francois, MD³, Joseph Greco, MD⁵,
Bret Rudy, MD⁶, Christopher M Petrilli, MD³

¹Center for Healthcare Innovation and Delivery Science, NYU Langone Health, New York, New York; ²Department of Population Health, NYU Grossman School of Medicine, New York, New York; ³Department of Medicine, NYU Grossman School of Medicine, New York, New York; ⁴Department of Surgery, NYU Grossman School of Medicine, New York, New York; ⁵NYU Winthrop Hospital, Mineola, New York; ⁶Department of Pediatrics, NYU Grossman School of Medicine, New York, New York.

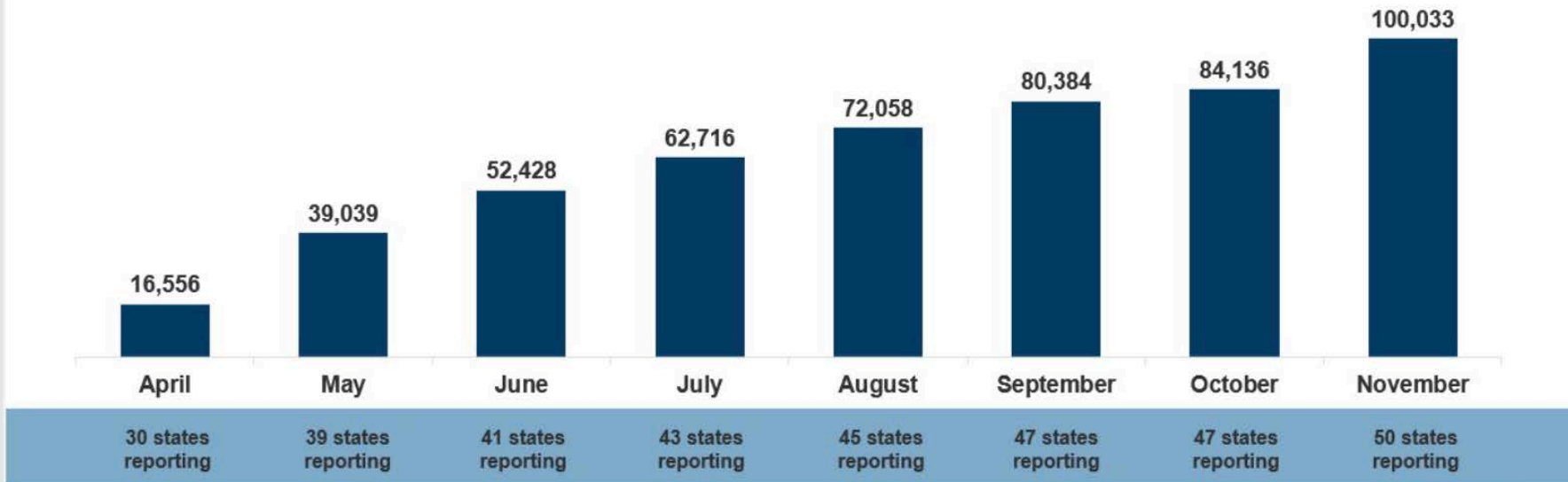


Mortality: Observed case-fatality ratio

Figure 1

As of November 24, 2020, more than 100,000 residents and staff in long-term care facilities have died due to COVID-19

Cumulative Deaths In Long-Term Care Facilities, April - November 2020

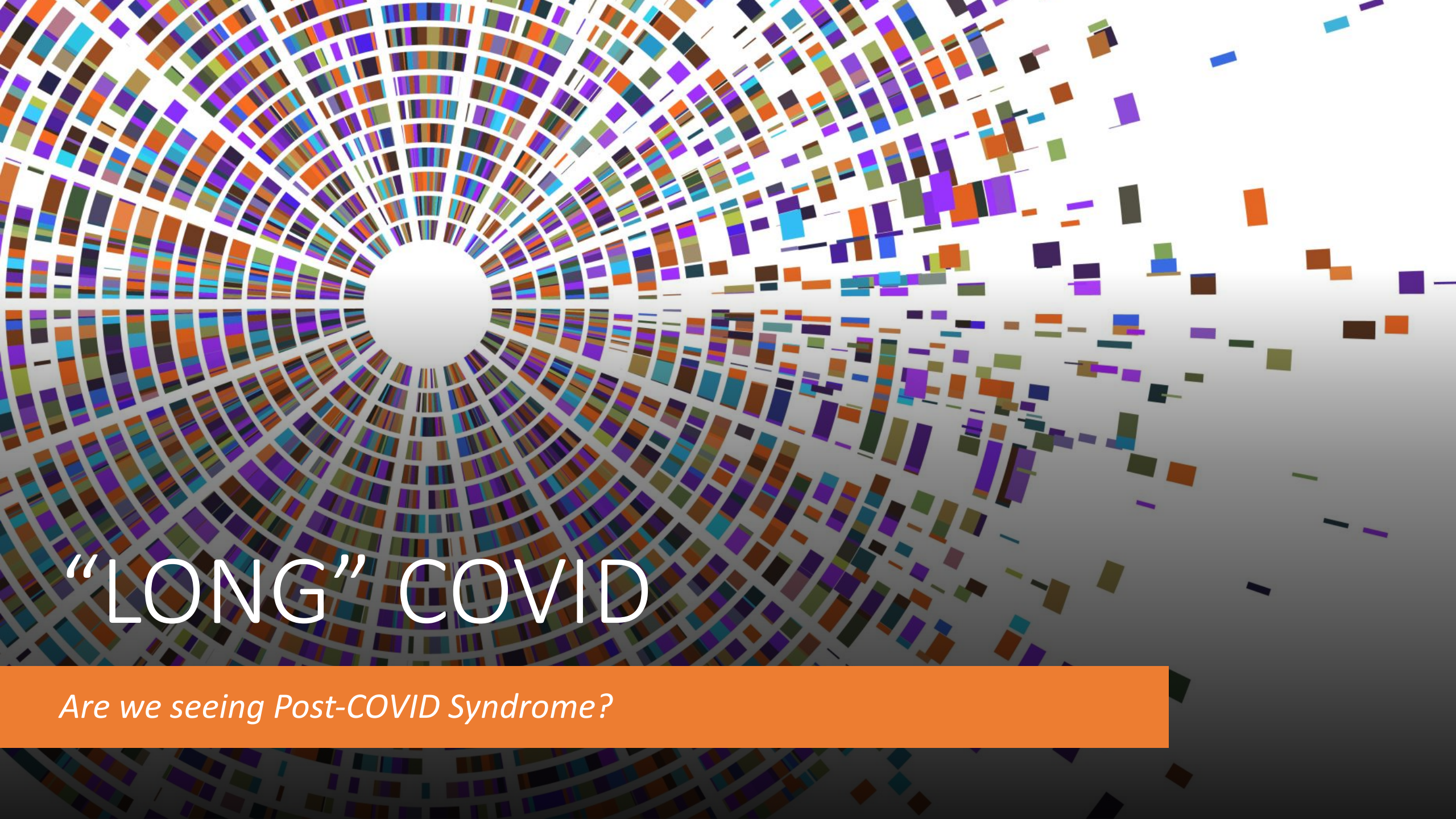


NOTES: Data reflects deaths in long-term care facilities as of the last week of each month. Given vast differences in which states are included in each month's reporting, data should be trended with caution. For state-level data, see [State Data and Policy Actions to Address Coronavirus](#).

SOURCE: KFF analysis of available state reports, press releases, official state data through news reports, and the COVID Tracking Project.



As of November 24, 2020, more than 100,00 residents and staff in long-term care facilities have died due to COVID-19





“LONG” COVID

Are we seeing Post-COVID Syndrome?

ORIGINAL ARTICLE | [ARTICLES IN PRESS](#)

Follow-up of adults with noncritical COVID-19 two months after symptom onset

[Claudia Carvalho-Schneider](#)   • [Emeline Laurent](#) • [Adrien Lemaigen](#) • ... [Catherine Gaudy-Graffin](#) •
[Leslie Grammatico-Guillon](#) • [Louis Bernard](#) • [Show all authors](#)

Published: October 05, 2020 • DOI: <https://doi.org/10.1016/j.cmi.2020.09.052>

[Comments \(3\)](#)

Attributes and predictors of Long-COVID: analysis of COVID cases and their symptoms collected by the Covid Symptoms Study App

[iD](#) Carole H. Sudre, [iD](#) Benjamin Murray, [iD](#) Thomas Varsavsky, [iD](#) Mark S. Graham, [iD](#) Rose S. Penfold, [iD](#) Ruth C. Bowyer, [iD](#) Joan Capdevila Pujol, [iD](#) Kerstin Klaser, [iD](#) Michela Antonelli, [iD](#) Liane S. Canas, [iD](#) Erika Molteni, [iD](#) Marc Modat, [iD](#) M. Jorge Cardoso, [iD](#) Anna May, [iD](#) Sajaysurya Ganesh, [iD](#) Richard Davies, [iD](#) Long H Nguyen, [iD](#) David A. Drew, [iD](#) Christina M. Astley, [iD](#) Amit D. Joshi, [iD](#) Jordi Merino, [iD](#) Neli Tsereteli, [iD](#) Tove Fall, [iD](#) Maria F. Gomez, [iD](#) Emma L. Duncan, [iD](#) Cristina Menni, [iD](#) Frances M.K. Williams, [iD](#) Paul W. Franks, [iD](#) Andrew T. Chan, [iD](#) Jonathan Wolf, [iD](#) Sebastien Ourselin, [iD](#) Tim Spector, [iD](#) Claire J. Steves

doi: <https://doi.org/10.1101/2020.10.19.20214494>

This article is a preprint and has not been peer-reviewed [what does this mean?]. It reports new medical research that has yet to be evaluated and so should not be used to guide clinical practice.

RESEARCH LETTERS | [ARTICLES IN PRESS](#)

Weight Loss in COVID-19 Positive Nursing Home Residents

[Michelle Martinchek, MD, MPH](#) * • [Kimberly J. Beiting, MD](#)  *  • [Jacob Walker, MD](#) • ...

[Katherine Thompson, MD](#) • [Lauren J. Gleason, MD, MPH](#) • [Stacie Levine, MD](#) • [Show all authors](#) •

[Show footnotes](#)

Published: November 28, 2020 • DOI: <https://doi.org/10.1016/j.jamda.2020.11.031>



PALTC Infrastructure

Where do we go from here?....



BOB CHIARITO/BLOCK CLUB CHICAGO

Nursing Home Workers Go On Strike For Hazard Pay As Coronavirus Outbreak Surges

Nearly 700 nursing home workers who are employed by Infinity Healthcare Management and are members of SEIU Healthcare Illinois went on strike.

LeadingAge Pandemic Playbook

For all Americans—especially those who care about older adults—2020 will be remembered as a year of anxiety, stress, fear, and grief. The worst pandemic in a century brought isolation, illness, and death to too many older adults and the people who care for them in all settings around the country.

LeadingAge knows that this year has challenged the operations, finances, creativity, and nimbleness of aging services providers. That's why we are proud to present this interactive collection of insight, wisdom, and critical lessons LeadingAge members have learned about serving older adults during a catastrophic health crisis. The Pandemic Playbook will help ensure that providers can prepare for and mitigate the impact of a future pandemic.



Open Discussion





THE FLORIDA SOCIETY
FOR POST-ACUTE AND
LONG-TERM
CARE MEDICINE

**400 Executive Center Drive, Suite 208
West Palm Beach, FL 33401**

www.fmda.org; www.bestcarepractices.org



This meeting has been recorded and will be available at www.fmda.org/journalclub.php