



COVID-19 Impact: Evolving Infection Control in PALTC

This meeting will be recorded and will be available at www.fmda.org/journalclub.php



FMDA Journal Club

April 28, 2021

Swati Gaur MD, MBA, CMD– Special Guest
Diane Sanders-Cepeda, DO, CMD – Host

Agenda

COVID State of the State

Clinical Updates

Evolving Infection Control in
PALTC

Open Discussion



COVID-19 Dashboard by the Center for Systems Science and Engineering (CSSE) at Johns Hopkins University (JHU)



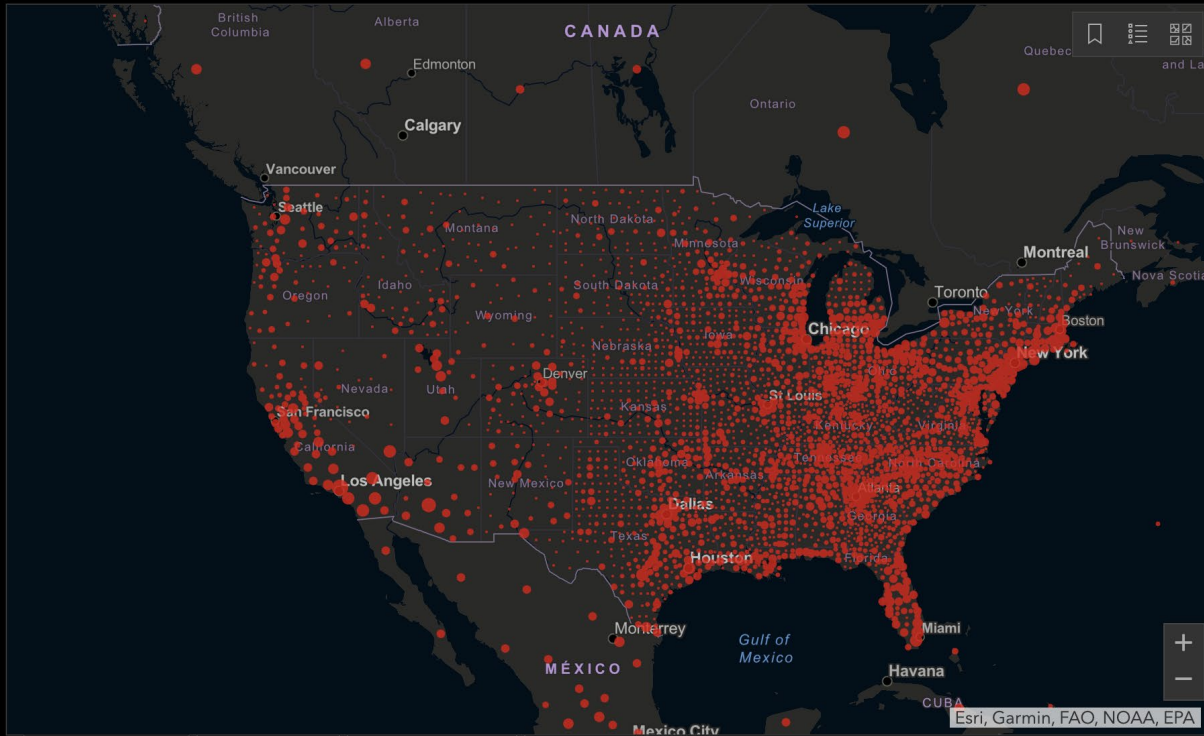
Global Cases
148,834,824

Cases by Country/Region/Sovereignty

32,177,167 US
17,997,113 India
14,441,563 Brazil
5,595,403 France
4,732,981 Russia
4,710,582 Turkey
4,425,262 United Kingdom
3,981,512 Italy
3,496,134 Spain
3,338,564 Germany
2,905,172 Argentina
2,804,881 Colombia
2,776,927 Poland
2,459,906 Iran

Admin0 Admin1 Admin2

Last Updated at (M/D/YYYY)
4/28/2021, 8:20 AM



Cumulative Cases Incidence Rate Case-Fatality Ratio Testing Rate

192
countries/regions

Lancet Inf Dis Article: [Here](#). Mobile Version: [Here](#). Data sources: [Full list](#). Downloadable database: [GitHub](#), [Feature Layer](#).
Lead by JHU CSSE. Technical Support: [Esri Living Atlas team](#) and [JHU APL](#). Financial Support: [JHU](#), [NSF](#), [Bloomberg Philanthropies](#) and [Stavros Niarchos Foundation](#). Resource support: [Slack](#), [Github](#) and [AWS](#).

Global Deaths

3,138,421

573,383 deaths US
395,022 deaths Brazil
215,547 deaths Mexico
201,187 deaths India
127,705 deaths United Kingdom
119,912 deaths Italy

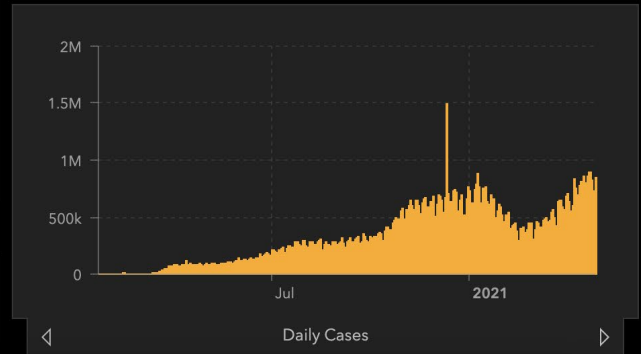
Global Deaths

Total Test Results in US

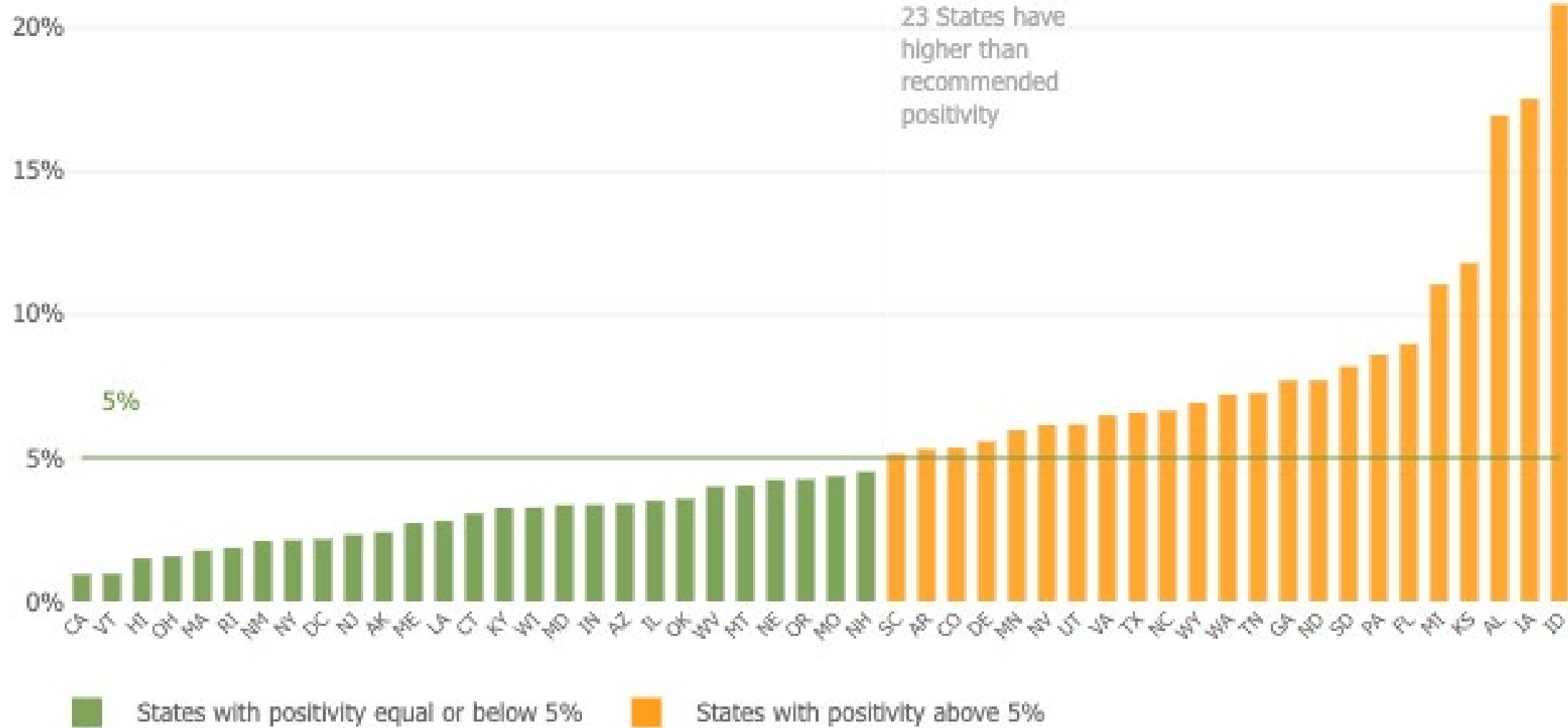
429,561,249

59,484,125 tests California US
50,591,724 tests New York US
22,855,470 tests Texas US
22,489,307 tests Florida US
22,381,515 tests Illinois US
21,068,225 tests Massachusetts US

US Test Results US Deaths



Positivity Percentage
(average of the last 7 days)





Florida's COVID-19 Data and Surveillance Dashboard

Florida Department of Health, Division of Disease Control and Health Protection

Select a County



Total Cases

2,217,368

Cumulative Data for Florida Residents:

Positive Residents

2,175,844

Resident Hospitalizations

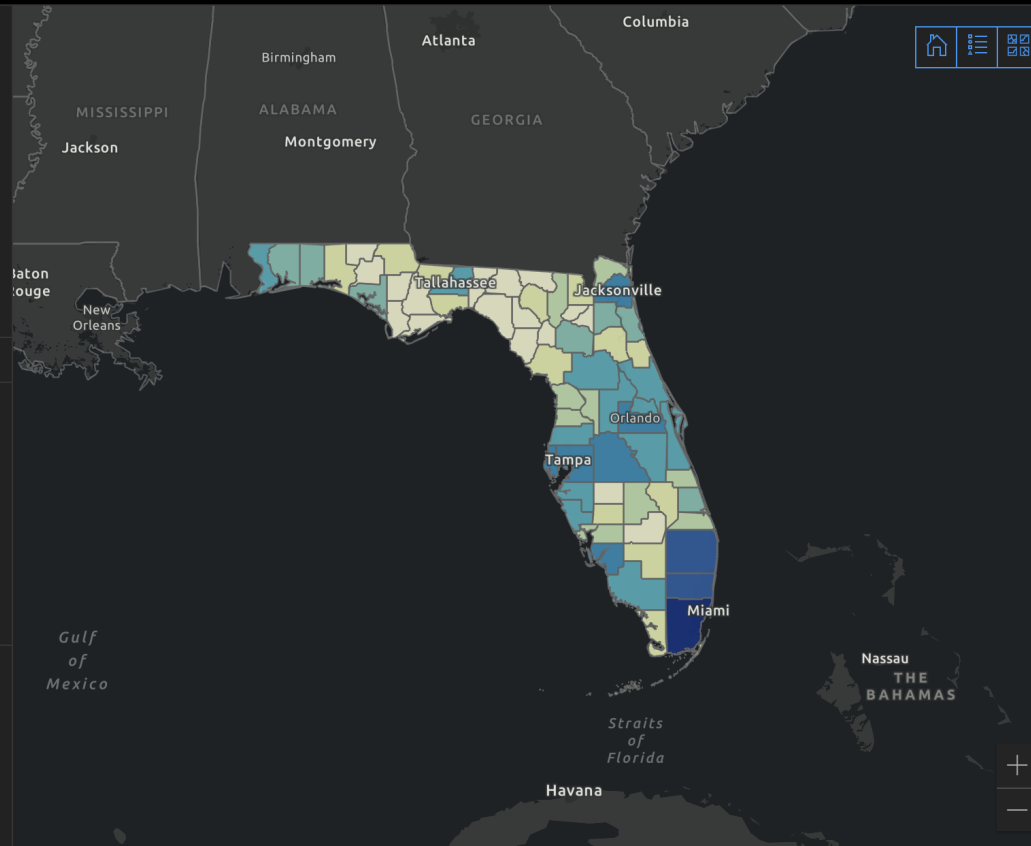
89,808

Florida Resident Deaths

34,958

Non-Resident Deaths

688



FDEP, Esri, HERE, Garmin, FAO, NOAA, USGS, EPA | Sources: Esri, TomTom, U.S. Department of Commerce, U.S. Census... Powered by Esri

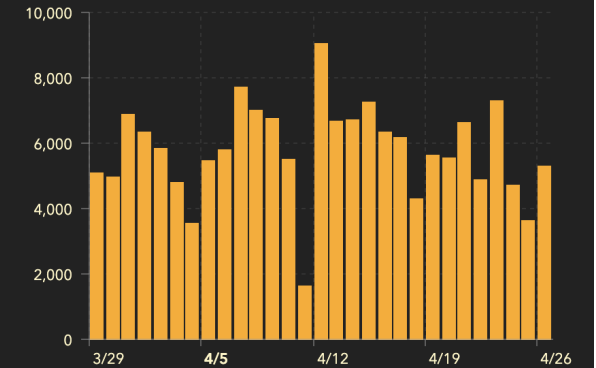
Data updated Daily

Comparison of counties is not possible because case data are not adjusted by population.

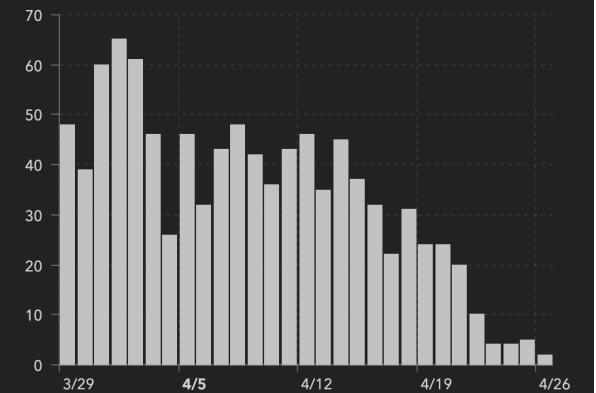
[Click here to access and download data](#)

Recent Data for Florida Residents (Last 30 Days):

New Cases of Residents by Day



Resident Deaths by Date of Death



The Deaths by Day chart shows the total number of Florida residents with confirmed COVID-19 that died on each calendar day (12:00 AM - 11:59 PM). Death data often has significant delays in reporting, so data within the past two weeks will be updated

- Florida Cases
- Florida Testing
- Cases by County
- Rates Map
- Case Maps
- Cases by Zip Code
- Health Metrics
- USA and World






Clinical Updates

COVID-19 Vaccinations in the United States

Overall US COVID-19 Vaccine | Deliveries and Administration; Maps, charts, and data provided by CDC, updates daily by 8 pm ET[†]

Represents all vaccine partners including jurisdictional partner clinics, retail pharmacies, long-term care facilities, dialysis centers, Federal Emergency Management Agency and Health Resources and Services Administration partner sites, and federal entity facilities.

Total Vaccine Doses		People Vaccinated		
		At Least One Dose	Fully Vaccinated	
Delivered	297,543,635	Total	141,751,857	96,747,454
Administered	232,407,669	% of Total Population	42.7%	29.1%
Learn more about the distribution of vaccines.		Population ≥ 18 Years of Age	139,902,174	96,247,756
		% of Population ≥ 18 Years of Age	54.2%	37.3%
		Population ≥ 65 Years of Age	44,754,293	37,149,968
		% of Population ≥ 65 Years of Age	81.8%	67.9%

 About these data CDC | Data as of: April 27, 2021 6:00am ET. Posted: Tuesday, April 27, 2021 2:15 PM ET

View:

- Total Doses
- People

Show:

- Administered
- Delivered

Metric:

- Count
- Rate per 100,000

Population:

- Total Population
- Population ≥ 18 Years of Age
- Population ≥ 65 Years of Age

This shows the number of doses administered within the state or territory for every 100,000 people of the total population. It does not reflect the residency of the person receiving the vaccine, but where they received it.

Total Doses Administered Reported to the CDC by State/Territory and for Select Federal Entities per 100,000 of the Total Population

CDC Recommends Use of Johnson & Johnson's Janssen COVID-19 Vaccine Resume

Updated Apr. 25, 2021 [Languages](#) [Print](#)

Updates as of April 25, 2021

START THE DAY HERE

Biden marks his first 100 days. Gas could be hard to find this summer. Garage grocery delivery is a thing.

CDC issues new outdoor mask guidance for fully vaccinated people

By [Elizabeth Cohen](#), [John Bonifield](#) and [Jacqueline Howard](#), CNN

🕒 Updated 5:03 PM ET, Tue April 27, 2021



Evolving Infection Control in PALTC

**Swati Gaur, MD, MBA, CMD; AMDA
Chair, AMDA's Infection Advisory
Committee**



Addressing Our Challenges

+



Pandemic Revelations

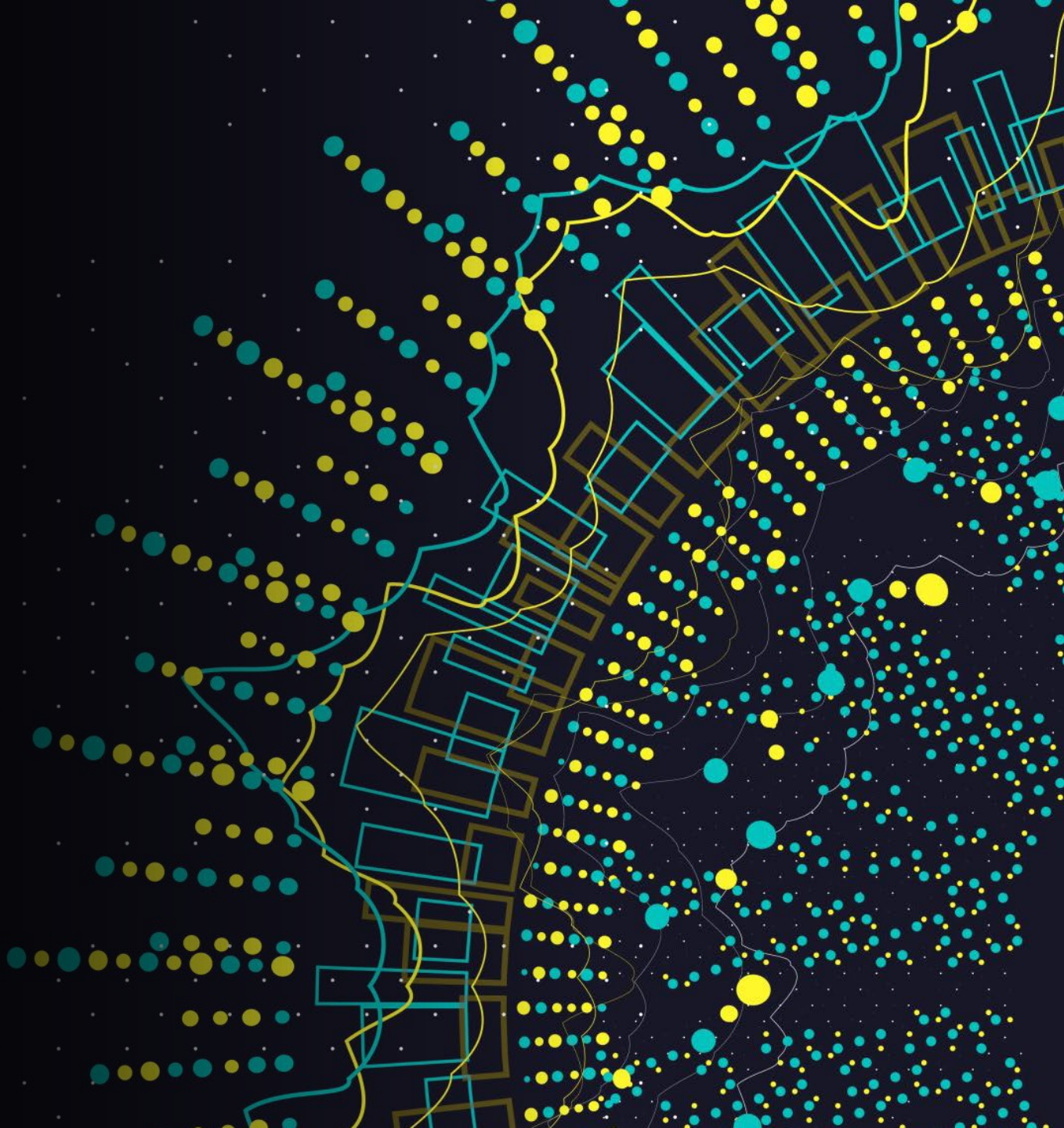


Community Surges & Facility Outbreaks





Vaccinations, Vaccinations, & Vaccinations





Reimagining our Infrastructure

A blurred, high-angle photograph of a desk. In the foreground, a black pen lies diagonally across an open notebook. The notebook's pages are slightly out of focus, but some faint text is visible. To the right, a portion of a white smartphone is visible. In the background, a stack of papers or a folder is also blurred. The overall lighting is soft and diffused, creating a professional and focused atmosphere.

Open Discussion



THE FLORIDA SOCIETY
FOR POST-ACUTE AND
LONG-TERM
CARE MEDICINE

**400 Executive Center Drive, Suite 208
West Palm Beach, FL 33401**

www.fmda.org; www.bestcarepractices.org



This meeting has been recorded and will be available at www.fmda.org/journalclub.php